

COPTER RNAV (GPS) 086°

HONEY GROVE/STOTTLE MEMORIAL (Ø2P)

APP CRS 086°	Rwy Idg TDZE Apt Elev	100 N/A 591
------------------------	-----------------------------	---------------------------------

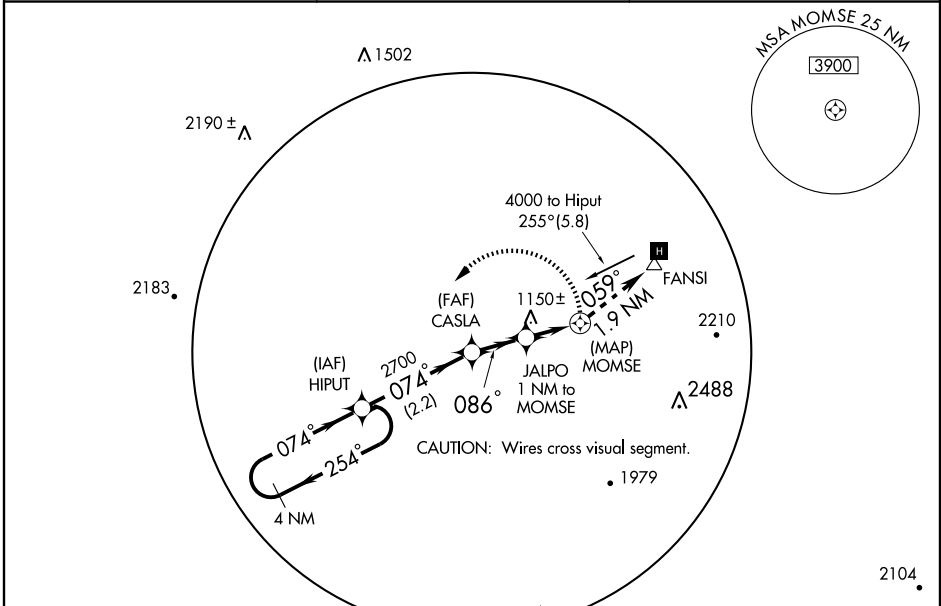
▲ NA Proceed VFR from MOMSE WP or conduct the specified missed approach.
Limit final, missed approach, and holding airspeed to 70 KIAS.
Use Reedsville/Mifflin County (RVL) altimeter setting.
Surface elevation 900' at MAP.

MISSED APPROACH: Climbing left turn to 4000 direct HIPUT WP and hold.

HARRISBURG APP CON
124.1 273.525

UNICOM
123.05 (CTAF)

122.8 0



NE-4, 22 OCT 2009 to 19 NOV 2009

NE-4, 22 OCT 2009 to 19 NOV 2009

