

RNAV (GPS) RWY 5

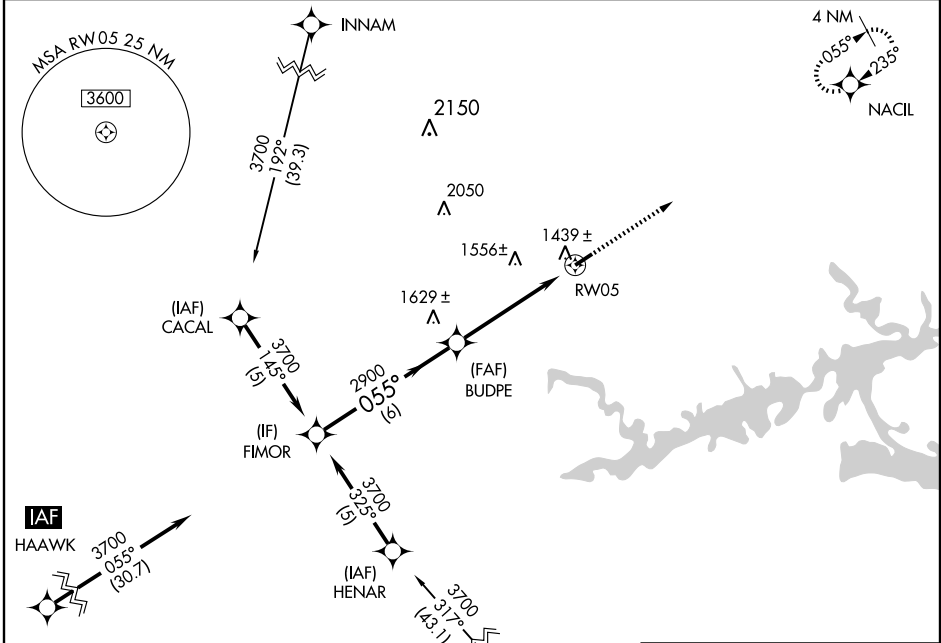
CLINTON/HOLLEY MOUNTAIN AIRPARK (2A.2)

APP CRS 055°	Rwy Idg 4397
	TDZE 1268
	Apt Elev 1268

▽ Obtain local altimeter setting on CTAF; when not received, use Marion County Rgnl altimeter setting. DME/DME RNP-0.3 NA.
▲ NA **IAF** ARM APPROACH MODE PRIOR TO IAF.

MISSED APPROACH: Climb to 3700 direct NACIL and hold.

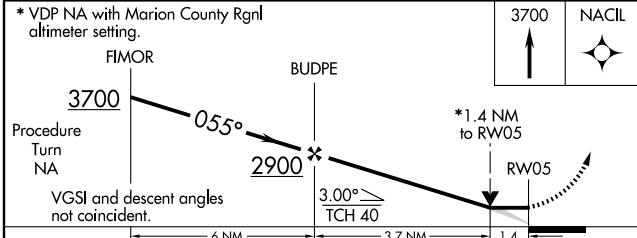
MEMPHIS CENTER 126.85 281.55	UNICOM 122.7 (CTAF) 0
--	---------------------------------



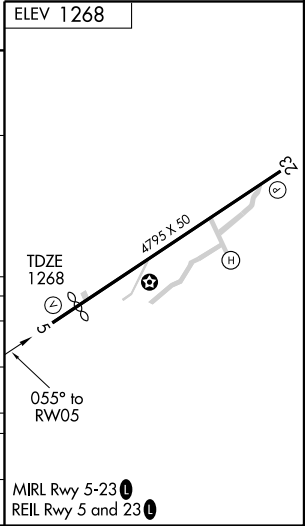
SC-1, 22 OCT 2009 to 19 NOV 2009

SC-1, 22 OCT 2009 to 19 NOV 2009

* VDP NA with Marion County Rgnl altimeter setting.



CATEGORY	A	B	C	D
RNAV MDA	1760-1	492 (500-1)	1760-1¼ 492 (500-1¼)	NA
CIRCLING	1760-1	492 (500-1)	1780-1½ 512 (600-1½)	NA
MARION COUNTY RGNL ALTIMETER SETTING MINIMUMS				
RNAV MDA	1920-1	652 (700-1)	1920-1¾ 652 (700-1¾)	NA
CIRCLING	1940-1	672 (700-1)	1960-2 692 (700-2)	NA



RNAV (GPS) RWY 5