

# RNAV (GPS) RWY 23

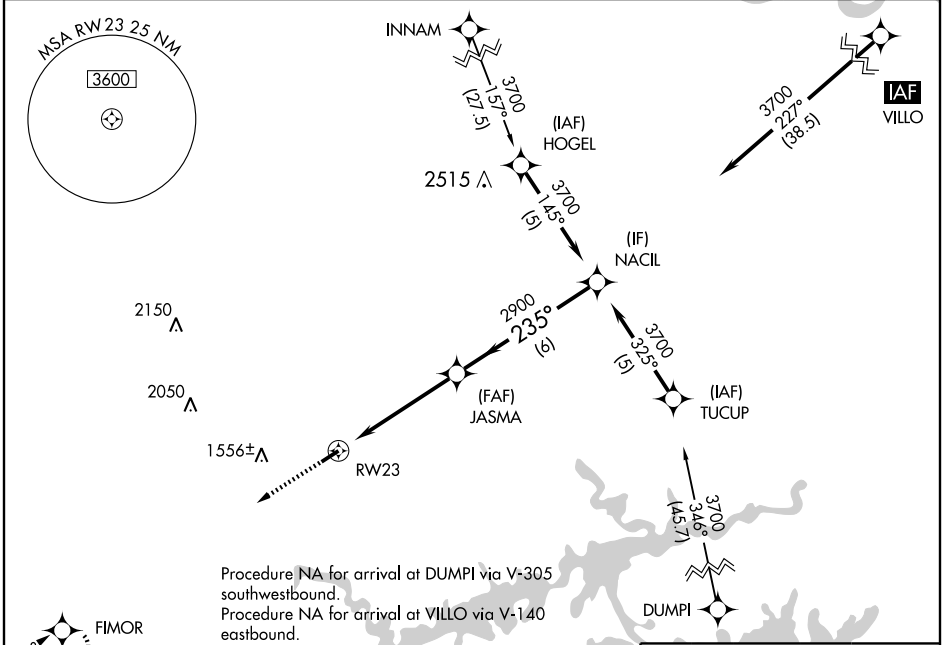
CLINTON/ HOLLEY MOUNTAIN AIRPARK (2A2)

APP CRS <b>235°</b>	Rwy Idg <b>4795</b>
	TDZE <b>1268</b>
	Apt Elev <b>1268</b>

**▼** Obtain local altimeter setting on CTAF; when not received, use Marion County Rgnl altimeter setting. GPS or RNP-0.3 Required. DME/DME RNP-0.3 NA.  
**▲ NA** **IAF** ARM APPROACH MODE PRIOR TO IAF.

MISSED APPROACH: Climb to 3700 direct FIMOR and hold.

MEMPHIS CENTER <b>126.85 281.55</b>	UNICOM <b>122.7 (CTAF) 0</b>
--	---------------------------------

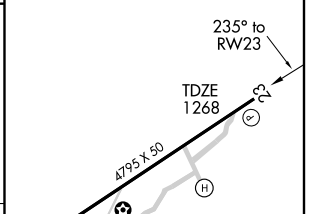
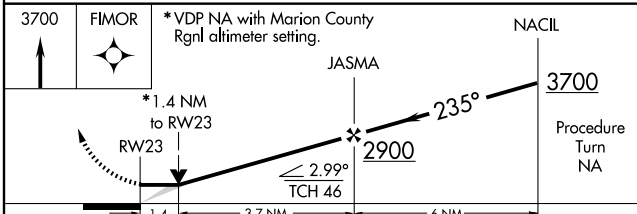


SC-1, 22 OCT 2009 to 19 NOV 2009

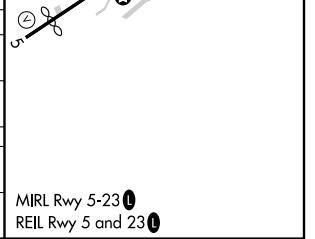
SC-1, 22 OCT 2009 to 19 NOV 2009



ELEV 1268
-----------



CATEGORY	A	B	C	D
LNVA MDA	1740-1	472 (500-1)	1740-1¼ 472 (500-1¼)	NA
CIRCLING	1760-1	492 (500-1)	1800-1½ 532 (600-1½)	NA
MARION COUNTY RGNL ALTIMETER SETTING MINIMUMS				
LNVA MDA	1900-1	632 (700-1)	1900-1¾ 632 (700-1¾)	NA
CIRCLING	1940-1	672 (700-1)	1960-2 712 (800-2)	NA



# RNAV (GPS) RWY 23

MIRL Rwy 5-23 0  
REIL Rwy 5 and 23 0