

CANON, GEORGIA

AL-9835 (FAA)

RNAV (GPS) RWY 8

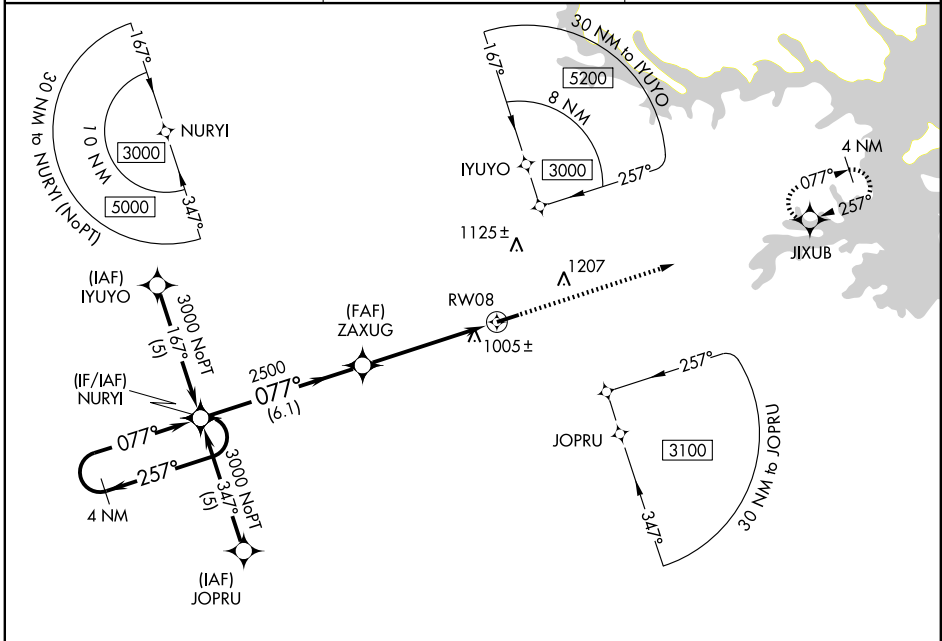
CANON/ FRANKLIN COUNTY (18A)

WAAS CH 69308 W08A	APP CRS 077°	Rwy Idg TDZE Apt Elev	5000 852 890
---------------------------------	------------------------	-----------------------------	---

NA DME/DME RNP-0.3 NA. Visibility reduction by helicopters NA. Use Toccoa altimeter setting; when not received, use Anderson Rgnl altimeter setting and increase all DA/MDA 20 feet, increase LPV all Cats. visibility ¼ mile.

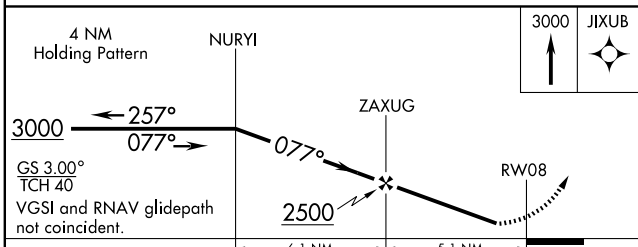
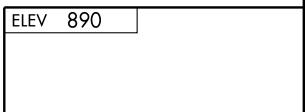
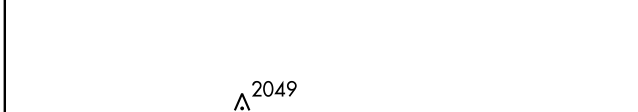
MISSED APPROACH: Climb to 3000 direct JIXUB and hold.

TOCCOA AWOS-3 119.625	ATLANTA CENTER★ 127.5 316.05	CTAF 122.9
---------------------------------	--	----------------------



SE-4, 22 OCT 2009 to 19 NOV 2009

SE-4, 22 OCT 2009 to 19 NOV 2009



CATEGORY	A	B	C	D
LPV DA	1202-1¼ 350 (400-1¼)			
LNAV MDA	1320-1 468 (500-1)	1320-1¼ 468 (500-1¼)	1320-1½ 468 (500-1½)	
CIRCLING	1380-1 490 (500-1)	1380-1½ 490 (500-1½)	1580-2¼ 690 (700-2¼)	

MIRL Rwy 8-26

CANON, GEORGIA
Orig 09099

34° 20'N-83° 08'W

CANON/ FRANKLIN COUNTY (18A)
RNAV (GPS) RWY 8