

CANON, GEORGIA

AL-9835 (FAA)

RNAV (GPS) RWY 26

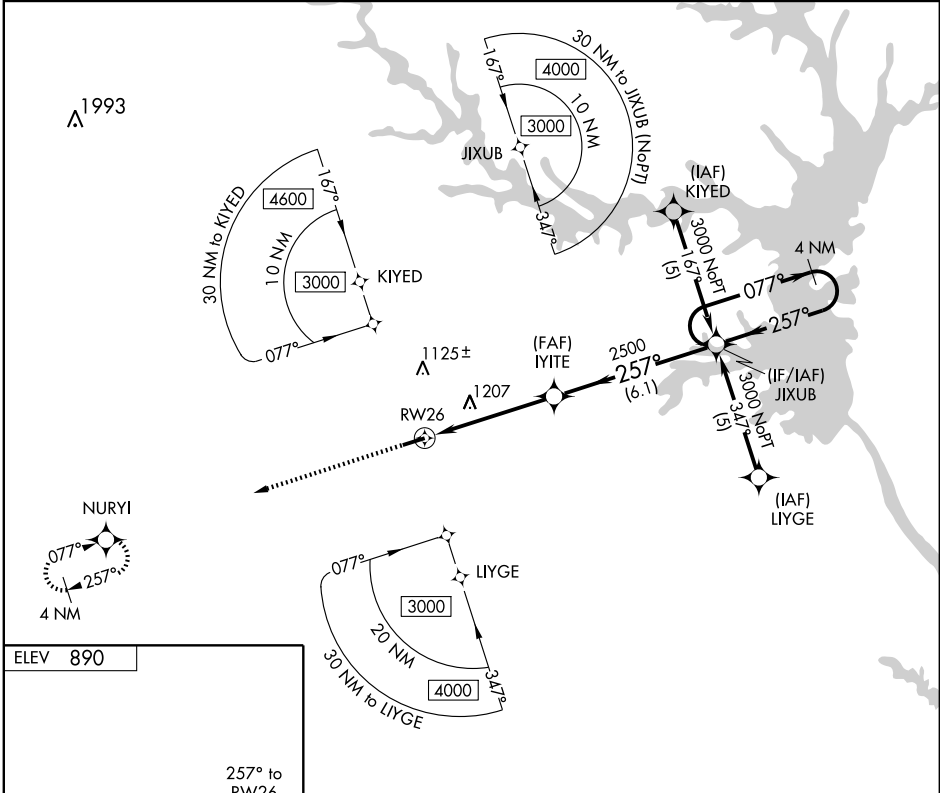
CANON/ FRANKLIN COUNTY (18A)

APP CRS	Rwy Idg	5000
257°	TDZE	890
	Apt Elev	890

NA DME/DME RNP-0.3 NA. Visibility reduction by helicopters NA. Use Toccoa altimeter setting; when not received, use Anderson Rgnl altimeter setting and increase all MDA 20 feet.

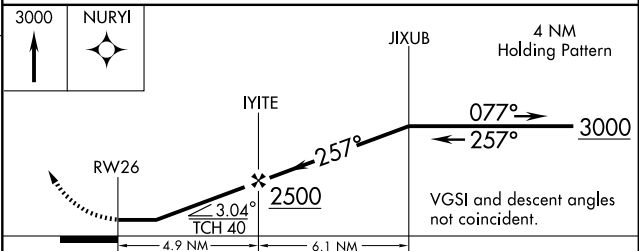
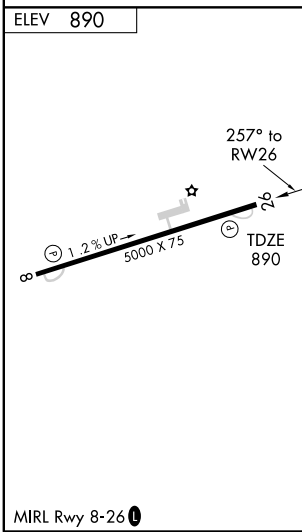
MISSED APPROACH: Climb to 3000 direct NURYI and hold.

TOCCOA AWOS-3 119.625	ATLANTA CENTER ★ 127.5 316.05	CTAF 122.9
---------------------------------	---	----------------------



SE-4, 22 OCT 2009 to 19 NOV 2009

SE-4, 22 OCT 2009 to 19 NOV 2009



CATEGORY	A	B	C	D
LNAV MDA	1520-1	630 (700-1)	1520-1¾ 630 (700-1¾)	1520-2 630 (700-2)
CIRCLING	1520-1	630 (700-1)	1520-1¾ 630 (700-1¾)	1580-2¼ 690 (700-2¼)

CANON, GEORGIA
Orig 09099

34° 20'N-83° 08'W

CANON/ FRANKLIN COUNTY (18A)
RNAV (GPS) RWY 26