

MARION, KENTUCKY

AL-9833 (FAA)

APP CRS	Rwy Idg	4400
248°	TDZE	643
	Apt Elev	652

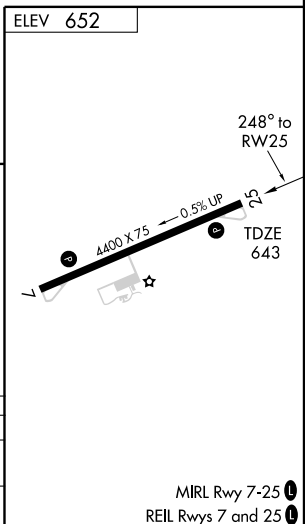
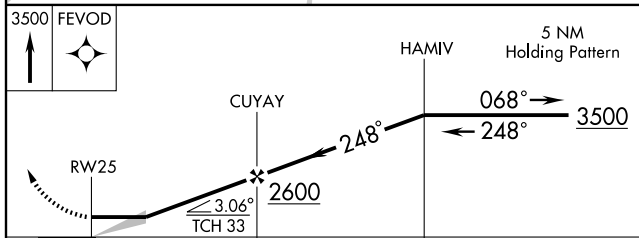
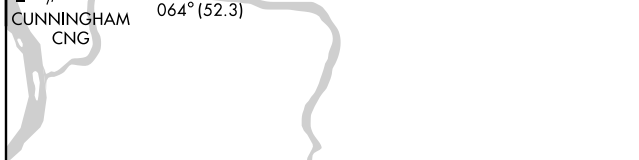
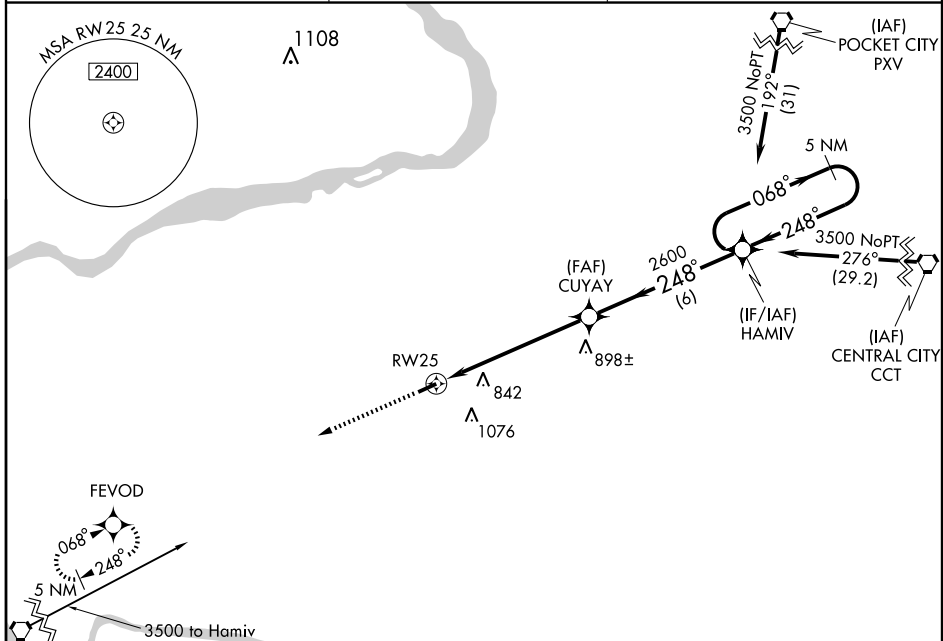
RNAV (GPS) RWY 25

MARION-CRITTENDEN COUNTY (5M9)

▲ NA DME/DME RNP-0.3 NA. Use Sturgis Muni altimeter setting, if not received, use Madisonville Muni altimeter setting and increase all MDAs 40 feet.

MISSED APPROACH: Climb to 3500 direct FEVOD and hold.

STURGIS MUNI AWOS-3 118.775	MEMPHIS CENTER 133.65 292.15	CTAF 122.9
---------------------------------------	--	----------------------



CATEGORY	A	B	C	D
RNAV MDA	1220-1	577 (600-1)	1220-1½ 577 (600-1½)	1220-1¾ 577 (600-1¾)
CIRCLING	1220-1	568 (600-1)	1280-1¾ 628 (700-1¾)	1460-2½ 808 (900-2½)

MIRL Rwy 7-25 **1**
REIL Rwy 7 and 25 **1**

SE-1, 22 OCT 2009 to 19 NOV 2009

SE-1, 22 OCT 2009 to 19 NOV 2009

MARION, KENTUCKY
Orig 08101

37°20'N - 88°07'W

RNAV (GPS) RWY 25