

RNAV (GPS) RWY 6

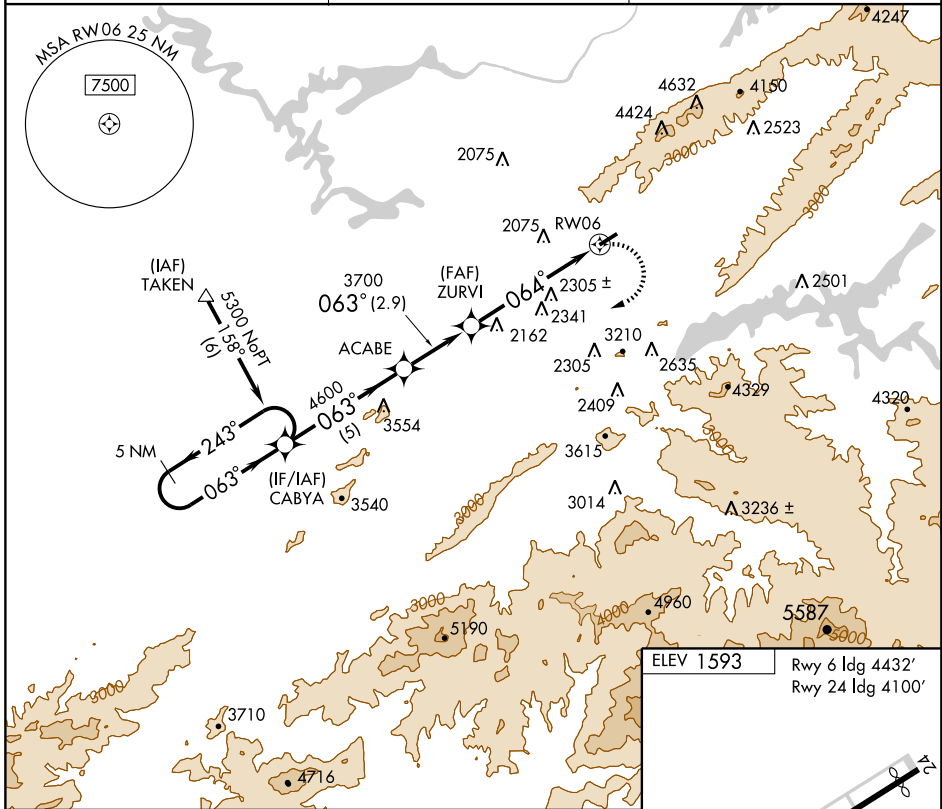
ELIZABETHTON MUNI (ØA9)

APP CRS	Rwy ldg	4432
064°	TDZE	1555
	Apt Elev	1593

▼ If local altimeter setting not received, use Tri-Cities Rgnl altimeter setting and increase all MDAs 60 ft. VDP NA when using Tri-Cities Rgnl altimeter setting.
▲ Circling NA Northwest of Rwy 6-24. DME/DME RNP-0.3 NA.
 Procedure NA at night. Visibility reduction by helicopters NA.

MISSED APPROACH: Climbing right turn to 5300 direct CABYA and hold.

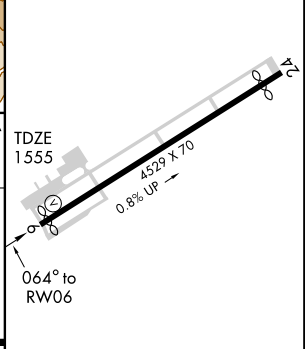
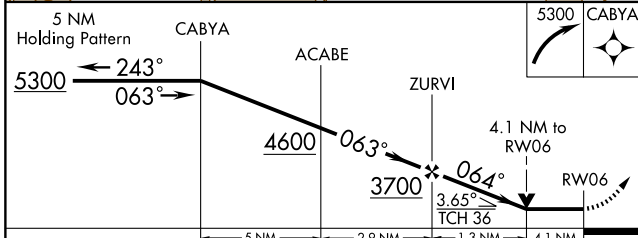
AWOS-3 135.675	TRI CITY APP CON 134.425 349.0	UNICOM 123.0 (CTAF)
--------------------------	--	-------------------------------



SE-1, 22 OCT 2009 to 19 NOV 2009

SE-1, 22 OCT 2009 to 19 NOV 2009

ELEV 1593	Rwy 6 ldg 4432'
	Rwy 24 ldg 4100'



CATEGORY	A	B	C	D
RNAV MDA	3240-1¼ 1685 (1700-1¼)	3240-1½ 1685 (1700-1½)	3240-3 1685 (1700-3)	NA
CIRCLING	3240-1¼ 1647 (1700-1¼)	3240-1½ 1647 (1700-1½)	3240-3 1647 (1700-3)	NA

LIRL Rwy 6-24