

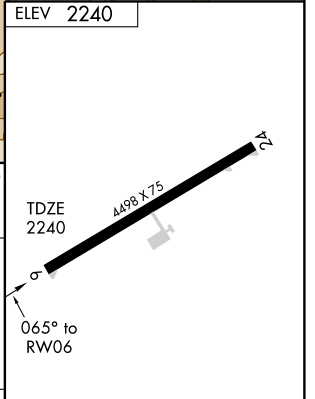
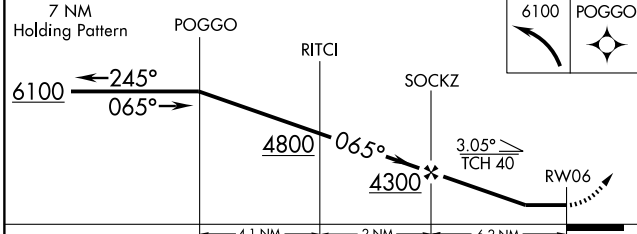
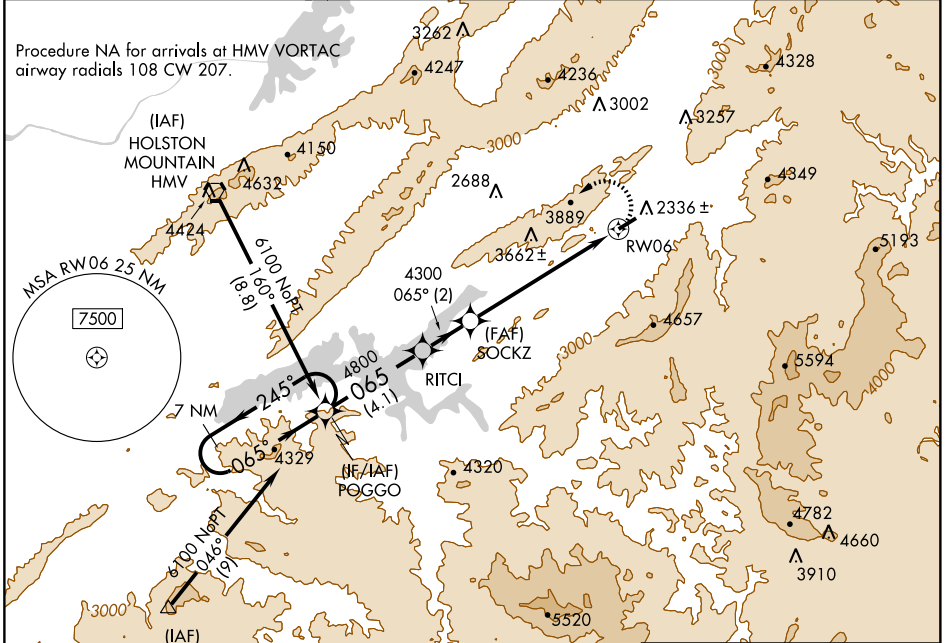
RNAV (GPS) RWY 6

MOUNTAIN CITY/ JOHNSON COUNTY (6A.4)

APP CRS 065°	Rwy Idg 4498 TDZE 2240 Apt Elev 2240
------------------------	---

<p>▽ Circling NA for Cat. D SE of Rwy 06-24. DME/DME RNP-0.3 NA. △ Procedure NA at night. Visibility reduction by helicopters NA. When local altimeter setting not received, use Virginia Highlands altimeter setting and increase all MDA 80 feet.</p>	<p>MISSED APPROACH: Climbing left turn to 6100 direct POGGO and hold.</p>
---	--

AWOS-3 126.225	TRI-CITY APP CON ★ 134,425 349.0	UNICOM 122.7 (CTAF)
--------------------------	--	-------------------------------



CATEGORY	A	B	C	D
LNVA MDA	3900-1¼ 1660 (1700-1¼)	3900-1½ 1660 (1700-1½)	3900-3 1660 (1700-3)	
CIRCLING	3900-1¼ 1660 (1700-1¼)	3900-1½ 1660 (1700-1½)	4280-3 2040 (2100-3)	4300-3 2060 (2100-3)

RNAV (GPS) RWY 6

SE-1, 22 OCT 2009 to 19 NOV 2009

SE-1, 22 OCT 2009 to 19 NOV 2009