

# RNAV (GPS) RWY 24

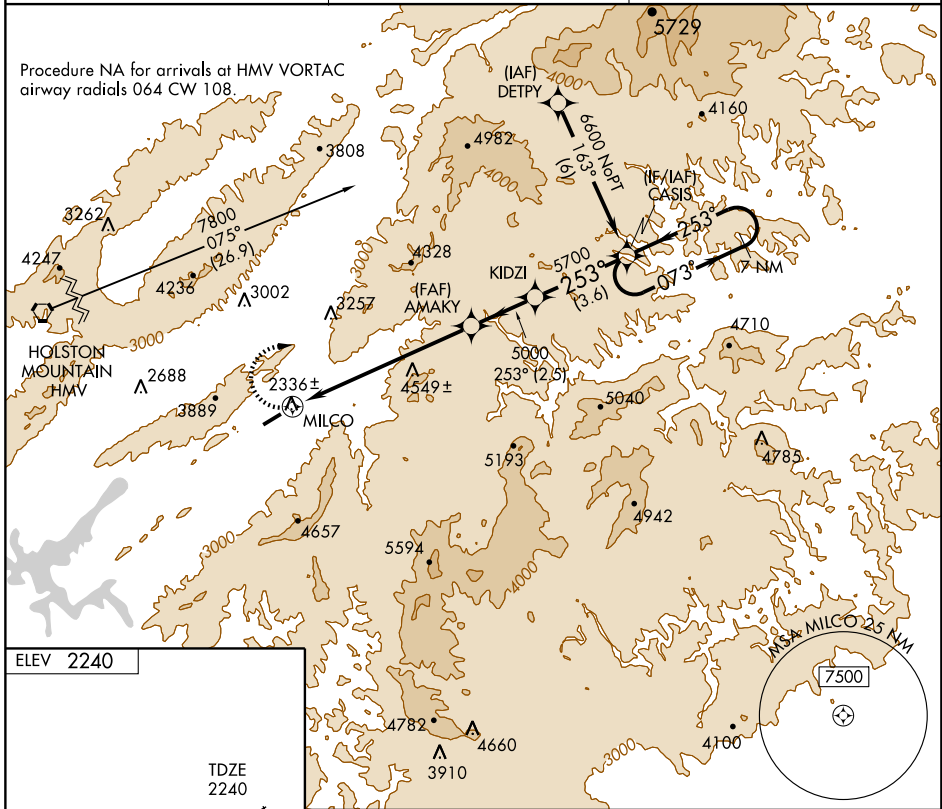
MOUNTAIN CITY/ JOHNSON COUNTY (6A.4)

APP CRS <b>253°</b>	Rwy Idg <b>4498</b>
	TDZE <b>2240</b>
	Apt Elev <b>2240</b>

**NA** DME/DME RNP-0.3 NA. Procedure NA at night.  
 Visibility reduction by helicopters NA.  
 When local altimeter setting not received, use Virginia Highlands altimeter setting and increase all MDA 80 feet.

**MISSED APPROACH:** Climbing right turn to 6600 direct CASIS and hold.

AWOS-3 <b>126.225</b>	TRI-CITY APP CON ★ <b>134.425 349.0</b>	UNICOM <b>122.7</b> (CTAF)
--------------------------	--	-------------------------------



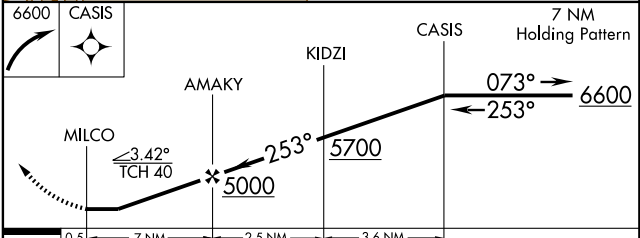
SE-1, 22 OCT 2009 to 19 NOV 2009

SE-1, 22 OCT 2009 to 19 NOV 2009

ELEV 2240

TDZE 2240

4498 X 75



CATEGORY	A	B	C	D
LNAV MDA	4880-1¼ 2640 (2700-1¼)	4880-1½ 2640 (2700-1½)	4880-3	2640 (2700-3)
CIRCLING	4880-1¼ 2640 (2700-1¼)	4880-1½ 2640 (2700-1½)	4880-3	2640 (2700-3)