

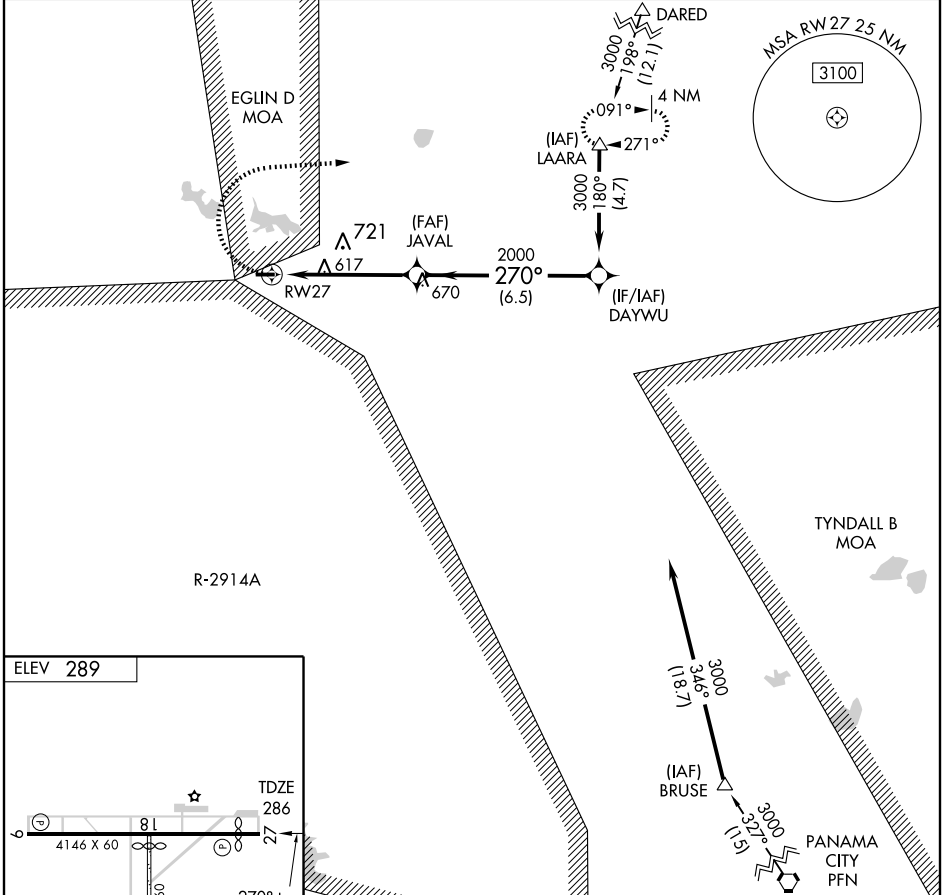
# RNAV (GPS) RWY 27

DEFUNIAK SPRINGS (54J)

APP CRS	Rwy Idg	<b>3541</b>
<b>270°</b>	TDZE	<b>286</b>
	Apt Elev	<b>289</b>

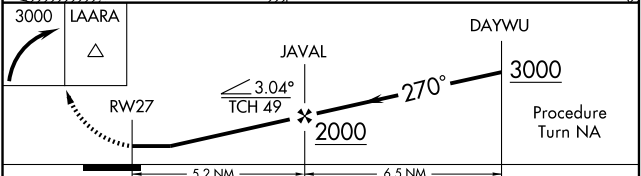
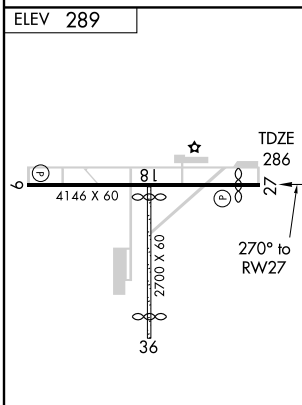
<p><b>▽</b> DME/DME RNP-0.3 NA. Visibility reduction by helicopters NA. Use Crestview altimeter setting; if not received, use Destin altimeter setting and increase all MDA 60 feet and increase Circling Cat. B visibility ¼ mile.</p>	<p><b>MISSED APPROACH:</b> Climbing right turn to 3000 direct LAARA and hold.</p>
---	---

<p>CRESTVIEW ASOS <b>119.275</b></p>	<p>EGLIN APP CON * <b>124.05 284.65</b></p>	<p>UNICOM <b>122.8 (CTAF) 0</b></p>
--	---	---



SE-3, 22 OCT 2009 to 19 NOV 2009

SE-3, 22 OCT 2009 to 19 NOV 2009



CATEGORY	A	B	C	D
LNAV MDA	940-1	652 (700-1)		NA
CIRCLING	940-1 651 (700-1)	980-1 691 (700-1)		NA