

VORTAC ENO 111.4 Chan 51	APP CRS 331°	Rwy Idg 2385 TDZE 106 Apt Elev 106
--	------------------------	---

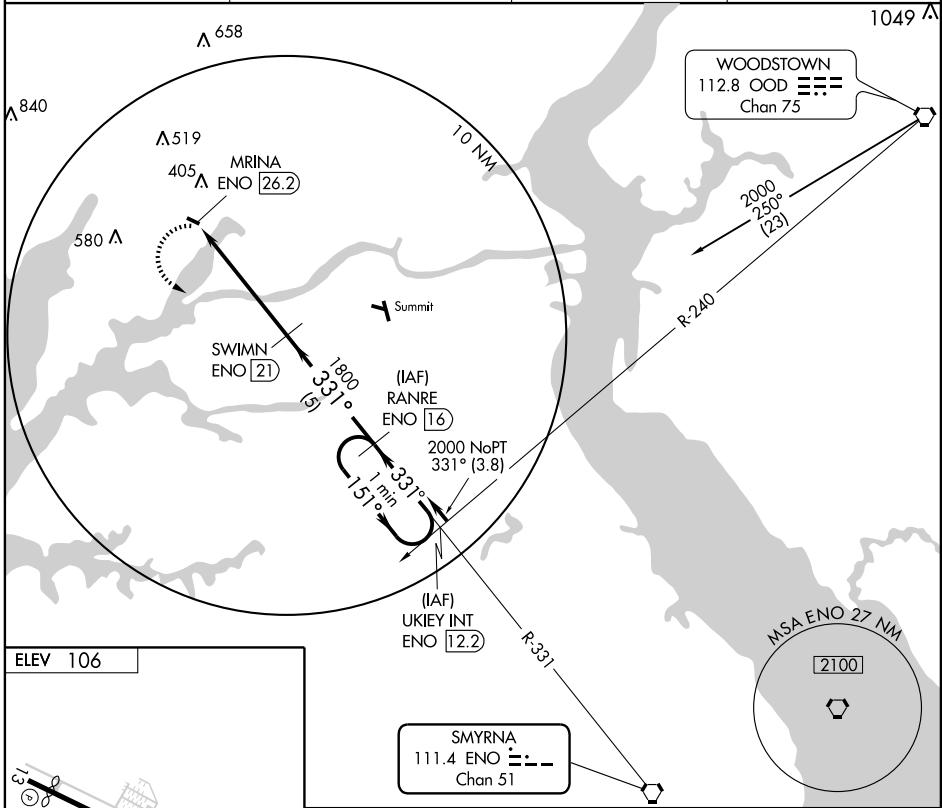
VOR/DME RWY 31

ELKTON/ CECIL COUNTY (58M)

▼ Use Summit, Middletown, DE altimeter setting; if not received, use New Castle, Wilmington, DE altimeter setting and raise all MDAs 20 feet.
▲ NA Circling NA at night.

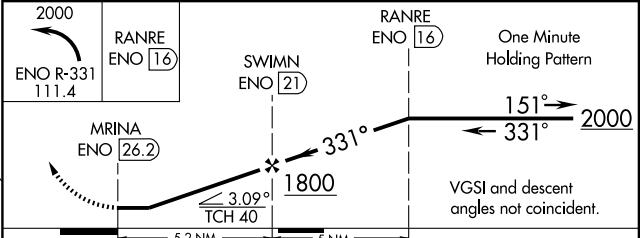
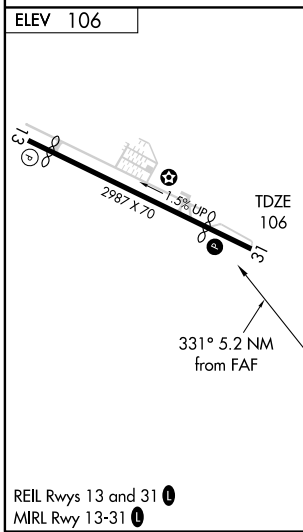
MISSED APPROACH: Climbing left turn to 2000 via ENO R-331 to RANRE/ENO VORTAC 16 DME and hold.

SUMMIT AWOS-3 132.325	PHILADELPHIA APP CON 118.35 323.1	UNICOM 122.8 (CTAF)	123.0 0
---------------------------------	---	-------------------------------	-----------------------



NE-3, 22 OCT 2009 to 19 NOV 2009

NE-3, 22 OCT 2009 to 19 NOV 2009



CATEGORY	A	B	C	D
S-31	720-1 614 (700-1)	720-1½ 614 (700-1½)	NA	
CIRCLING	820-1 714 (800-1)	820-1½ 714 (800-1½)	NA	