

RNAV (GPS) RWY 31

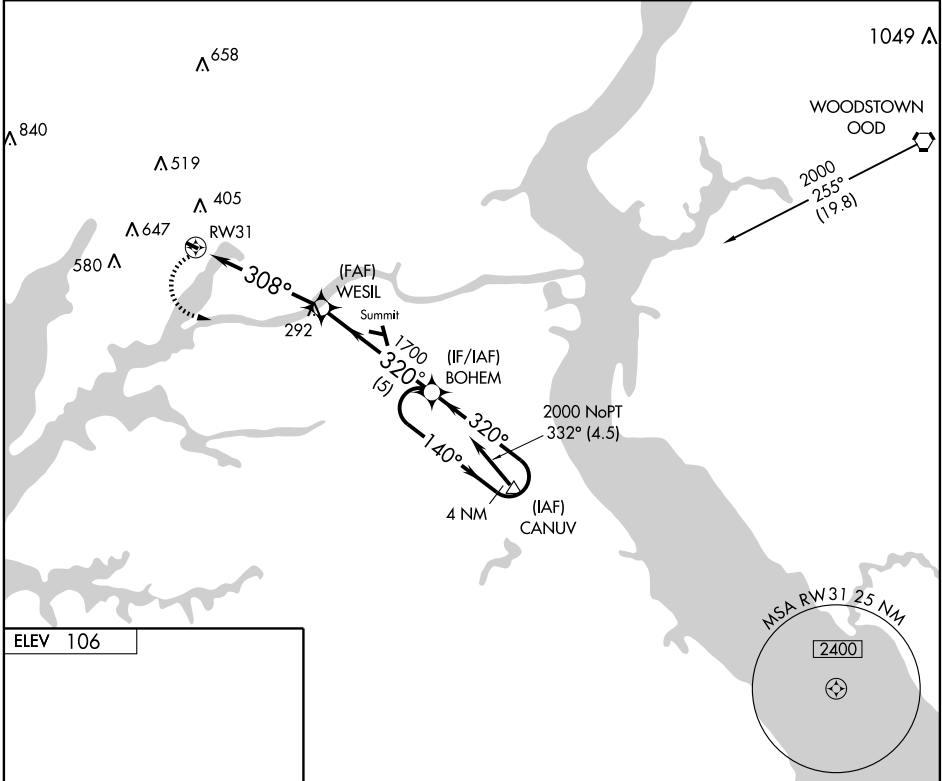
ELKTON/ CECIL COUNTY (58M)

APP CRS	Rwy Idg	2385
308°	TDZE	106
	Apt Elev	106

▼ GPS or RNP -0.3 required. DME/DME RNP -0.3 NA.
 Use Summit, Middletown, DE altimeter setting; if not received, use New Castle, Wilmington, DE altimeter setting and raise all MDAs 20 feet.
▲ NA Circling NA at night.

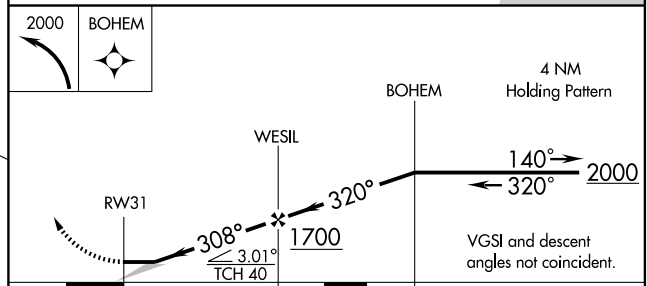
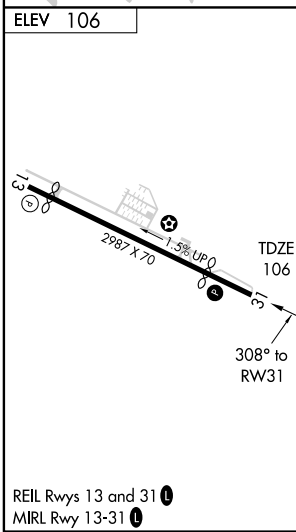
MISSED APPROACH: Climbing left turn to 2000 direct BOHEM WP and hold.

SUMMIT AWOS-3 132.325	PHILADELPHIA APP CON 118.35 323.1	UNICOM 122.8 (CTAF)	123.0 ①
---------------------------------	---	-------------------------------	-----------------------



NE-3, 22 OCT 2009 to 19 NOV 2009

NE-3, 22 OCT 2009 to 19 NOV 2009



CATEGORY	A	B	C	D
LNAV MDA	600-1	494 (500-1)		NA
CIRCLING	820-1	714 (800-1)		NA