

ELKTON, MARYLAND

AL-9807 (FAA)

APP CRS	Rwy Idg	2699
127°	TDZE	106
	Apt Elev	106

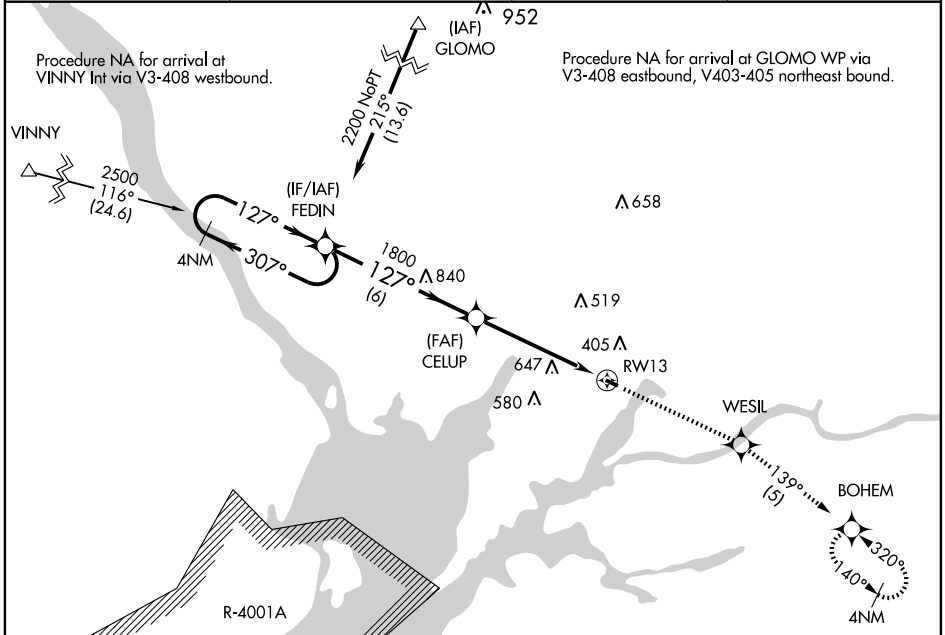
RNAV (GPS) RWY 13

ELKTON/CECIL COUNTY (58M)

▼ Use Summit, Middletown, DE altimeter setting; if not received, use New Castle County, Wilmington, DE altimeter setting and increase all MDAs 20 feet.
▲ NA GPS or RNP-0.3 required. DME/DME RNP-0.3 NA.
 Procedure NA at night.

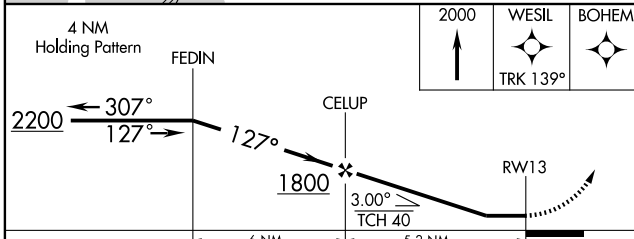
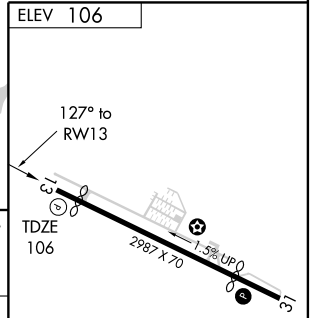
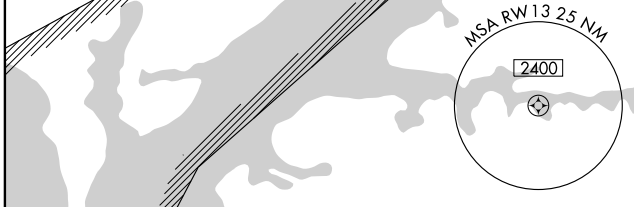
MISSED APPROACH: Climb to 2000 direct WESIL WP and via 139° track to BOHEM WP and hold.

SUMMIT AWOS-3 132.325	PHILADELPHIA APP CON 118.35 323.1	UNICOM 122.8 (CTAF)	123.0
---------------------------------	---	-------------------------------	--------------

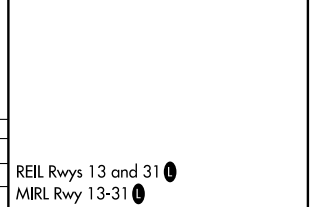


NE-3, 22 OCT 2009 to 19 NOV 2009

NE-3, 22 OCT 2009 to 19 NOV 2009



CATEGORY	A	B	C	D
LNAV MDA	980-1¼	874 (900-1¼)		NA
CIRCLING	980-1¼	874 (900-1¼)		NA



ELKTON, MARYLAND
 Orig-A 09183

39°34'N - 75°52'W

RNAV (GPS) RWY 13

ELKTON/CECIL COUNTY (58M)