

RNAV (GPS) RWY 16

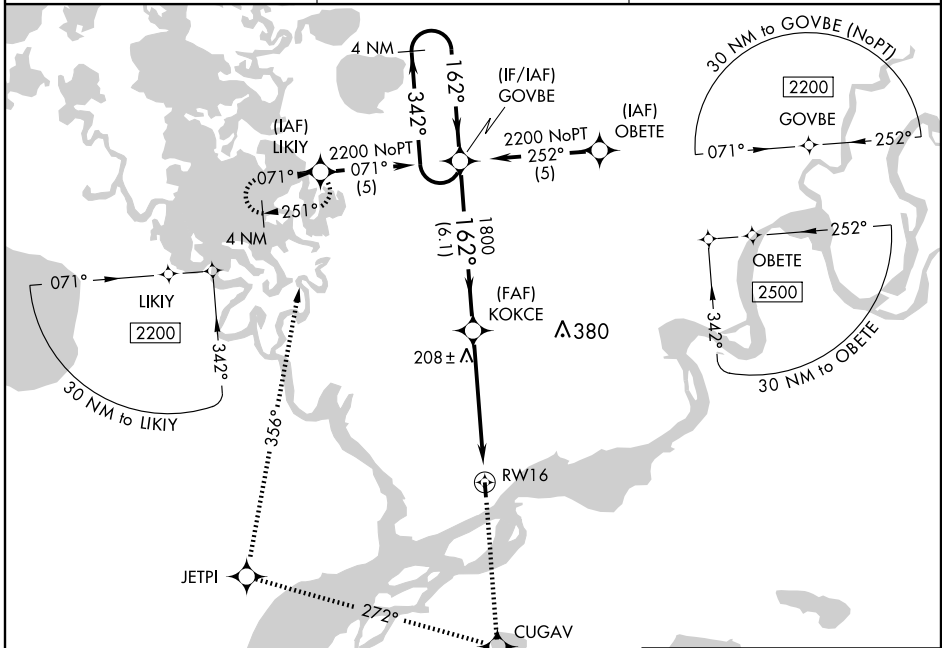
NAPAKIAK (WNA) (PANA)

WAAS CH 69409 W16A	APP CRS 162°	Rwy Idg 3248 TDZE 17 Apt Elev 17
--	------------------------	---

NA DME/DME RNP-0.3 NA. Visibility reduction by helicopters NA. Use Bethel altimeter setting; when not received, procedure NA.

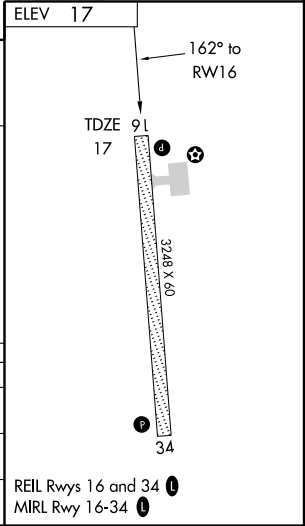
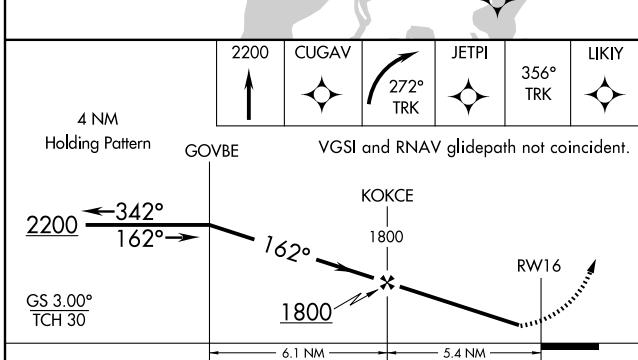
MISSED APPROACH: Climb to 2200 direct CUGAV and right turn via 272° track to JETPI and via 356° track to LIKIY and hold.

BETHEL ASOS 119.80	ANCHORAGE CENTER 125.2 372.0	CTAF 122.9
------------------------------	--	----------------------



AK, 22 OCT 2009 to 17 DEC 2009

AK, 22 OCT 2009 to 17 DEC 2009



CATEGORY	A	B	C	D
LPV DA	298-1 281 (300-1)			
LNAV MDA	500-1	483 (500-1)	500-1½ 483 (500-1½)	500-1½ 483 (500-1½)
CIRCLING	500-1	483 (500-1)	500-1½ 483 (500-1½)	580-2 563 (600-2)