

KOTLIK, ALASKA

AL-9750 (FAA)

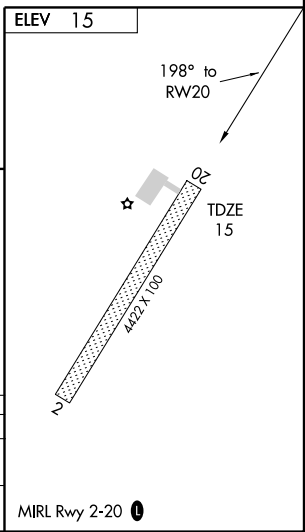
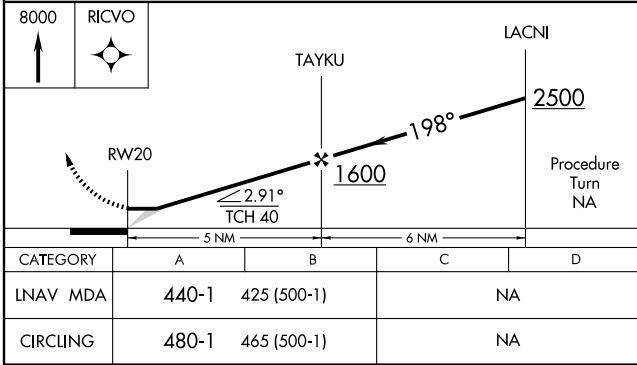
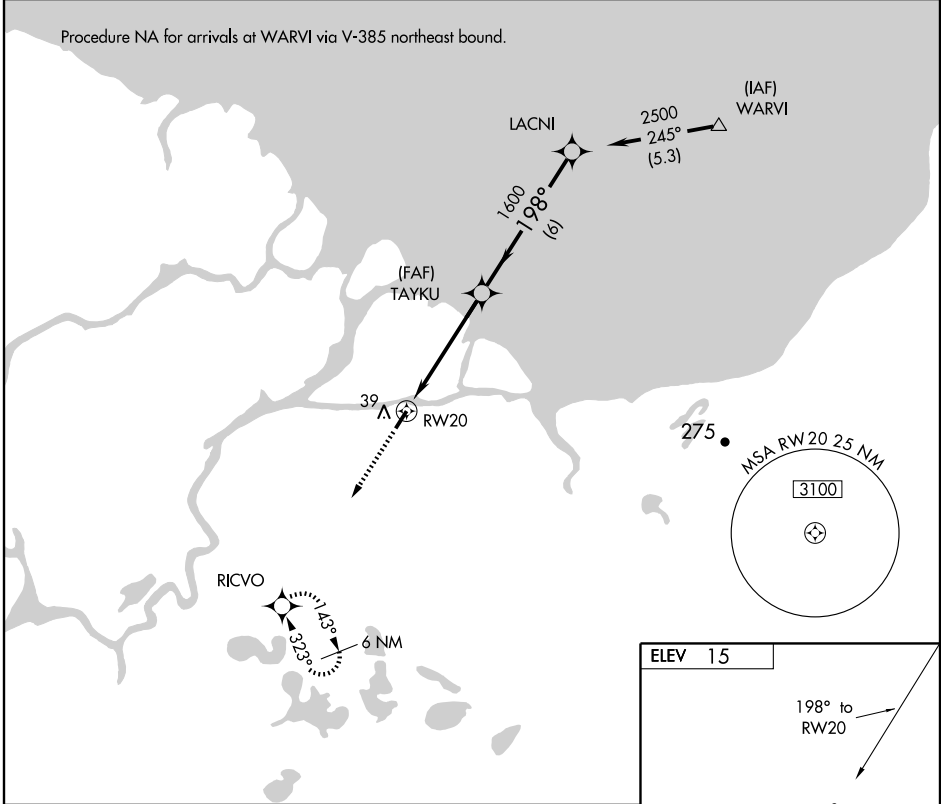
RNAV (GPS) RWY 20

KOTLIK (2A9) (PFKO)

APP CRS 198°	Rwy Idg TDZE Apt Elev	4422 15 15
------------------------	-----------------------------	---------------------------------------

▲ NA	DME/DME RNP-0.3 NA. Use EMMONAK altimeter setting. Procedure NA at night.	MISSED APPROACH: Climb to 8000 direct RICVO WP and hold.
-------------	---	--

EMMONAK AWOS-3 135.35	ANCHORAGE CENTER 124.5 226.8	CTAF 122.9 ①
---------------------------------	--	-------------------------------



AK, 22 OCT 2009 to 17 DEC 2009

AK, 22 OCT 2009 to 17 DEC 2009

KOTLIK, ALASKA
Orig-A 09183

63° 02' N-163° 32' W

RNAV (GPS) RWY 20

KOTLIK (2A9) (PFKO)