

STAFFORD, VIRGINIA

AL-9743 (FAA)

| | | | |
|--|------------------------|-----------------------------|---|
| VORTAC BRV 114.5 Chan 92 | APP CRS 314° | Rwy Idg TDZE Apt Elev | 5000 196 212 |
|--|------------------------|-----------------------------|---|

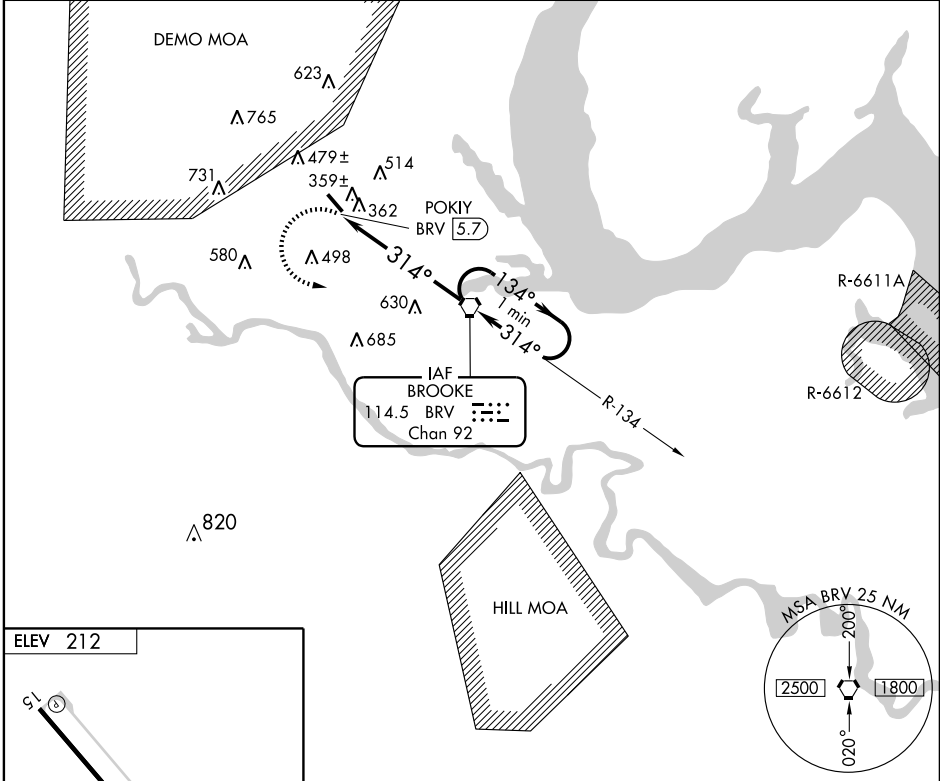
VOR RWY 33

STAFFORD RGNL (RMN)

▽ If local altimeter setting not received, use Shannon, Fredericksburg, VA altimeter setting and increase all MDAs 40 feet. VDP NA with Shannon, Fredericksburg, VA altimeter setting. Inoperative table does not apply to Cat C.

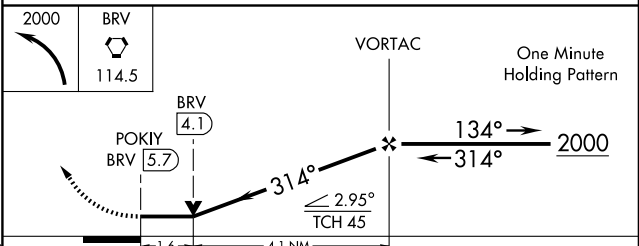
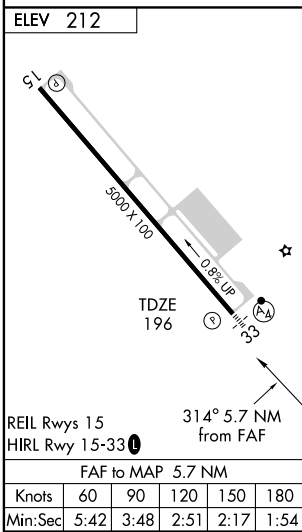
MALS MISSED APPROACH: Climbing left turn to 2000 direct BRV VORTAC and hold.

| | | | |
|--------------------------|--|-----------------------|---------------------------------|
| AWOS-3 126.325 | POTOMAC APP CON 124.65 306.925 | GCO 135.075 | UNICOM 122.725 (CTAF) |
|--------------------------|--|-----------------------|---------------------------------|



NE-3, 22 OCT 2009 to 19 NOV 2009

NE-3, 22 OCT 2009 to 19 NOV 2009



| CATEGORY | A | B | C | D |
|----------|--|---|--|--|
| S-33 | 740- $\frac{3}{4}$ 544 (600- $\frac{3}{4}$) | | 740-1 $\frac{1}{2}$ 544 (600-1 $\frac{1}{2}$) | 740-1 $\frac{3}{4}$ 544 (600-1 $\frac{3}{4}$) |
| CIRCLING | 740-1 528 (600-1) | | 840-1 $\frac{3}{4}$ 628 (700-1 $\frac{3}{4}$) | 860-2 648 (700-2) |

STAFFORD, VIRGINIA
Amdt 1 09183

38°24'N - 77°27'W

VOR RWY 33

STAFFORD RGNL (RMN)