

STAFFORD, VIRGINIA

AL-9743 (FAA)

RNAV (GPS) RWY 33

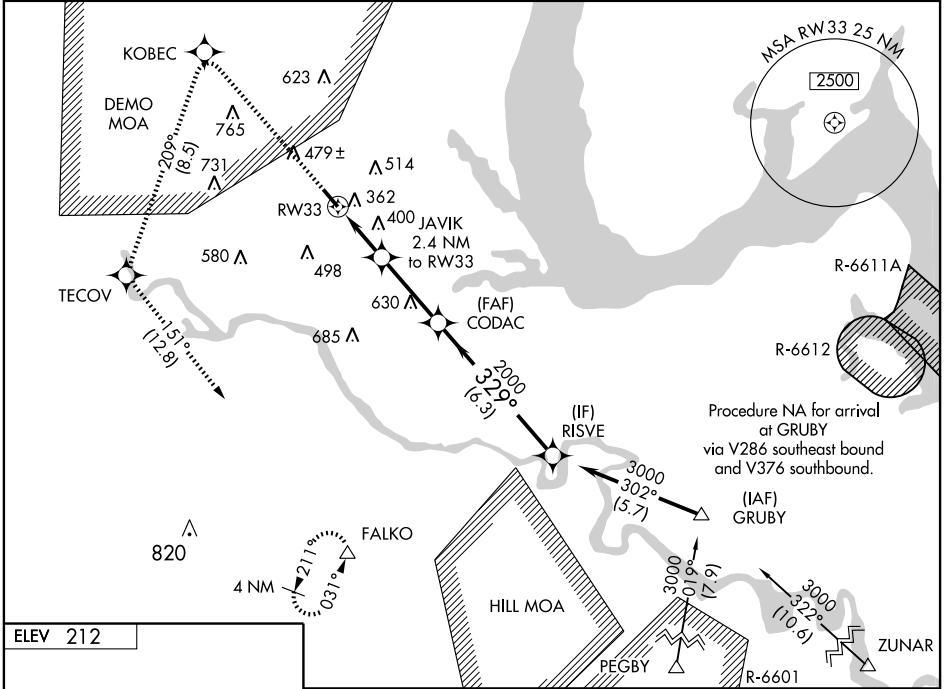
STAFFORD RGNL (RMN)

WAAS CH 81805 W33A	APP CRS 329°	Rwy Idg TDZE Apt Elev	5000 196 212
--	------------------------	-----------------------------	---

▽ If local altimeter setting not received, use Shannon, Fredericksburg, VA altimeter setting and increase all DAs/MDAs 40 feet. Baro/VNAV NA below -15°C (5°F). VDP and Baro-VNAV NA when using Shannon, Fredericksburg, VA altimeter setting. Inoperative table does not apply to LNAV Cat C. DME/DME RNP-0.3 NA.

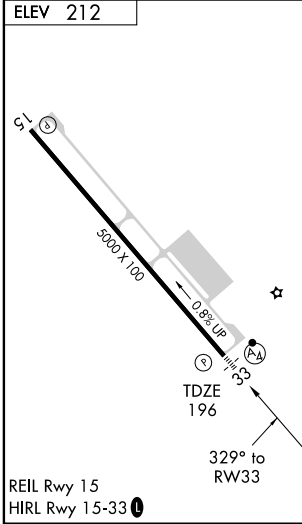
MALS
△ MISSED APPROACH: Climb to 4000 direct KOBEC and left turn via 209° track to TECOV and left turn via 151° track to FALCO and hold.

AWOS-3 126.325	POTOMAC APP CON 124.65 306.925	GCO 135.075	UNICOM 122.725 (CTAF)
--------------------------	--	-----------------------	---------------------------------



NE-3, 22 OCT 2009 to 19 NOV 2009

NE-3, 22 OCT 2009 to 19 NOV 2009



4000	KOBEC	TECOV	FALCO	RISVE
↑	209° TRK	151° TRK		3000
	JAVIK 2.4 NM to RW33	CODAC		Procedure Turn NA
	* 1.5 NM to RW33	* 980	* 2000	GS 3.00° TCH 46
	1.5 NM	0.9	3.1 NM	6.3 NM
CATEGORY	A	B	C	D
LPV DA		450-¾ 254 (300-¾)		450-1 254 (300-1)
LNAV/VNAV DA		460-¾ 264 (300-¾)		460-1 264 (300-1)
LNAV MDA	700-¾	504 (500-¾)	700-1½	504 (500-1½)
CIRCLING	720-1 508 (600-1)	740-1 528 (600-1)	840-1¾ 628 (700-1¾)	880-2 668 (700-2)

STAFFORD, VIRGINIA
Amdt 1 09183

38°24'N - 77°27'W

RNAV (GPS) RWY 33