

LOC/DME I-RMN	APP CRS	Rwy Idg	5000
108.75	329°	TDZE	196
Chan 24 (Y)		Apt Elev	212

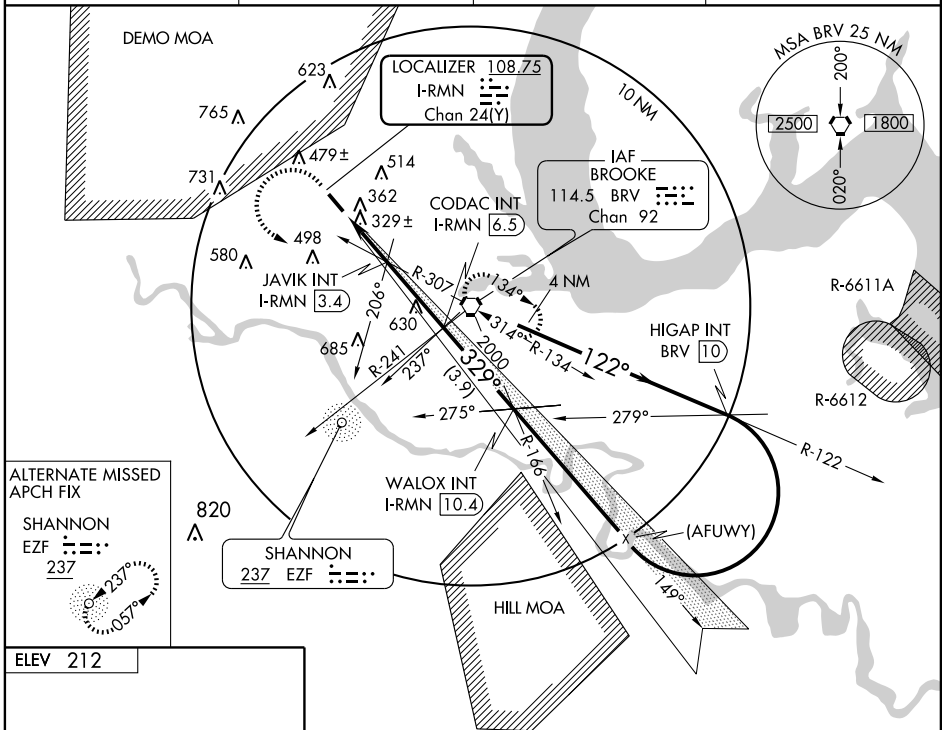
ILS or LOC RWY 33

STAFFORD RGNL (RMN)

▽ If local altimeter setting not received, use Shannon, Fredericksburg, VA altimeter setting and increase all DH/MDAs 40 feet.
▲NA Inoperative table does not apply to S-ILS 33 and to S-LOC Cats B and C. DME or ADF required.

MALS MISSED APPROACH: Climb to 600 then climbing left turn to 2000 direct BRV VORTAC and hold.

AWOS-3 126.325	POTOMAC APP CON 124.65 306.925	GCO 135.075	UNICOM 122.725 (CTAF) 0
--------------------------	--	-----------------------	-----------------------------------

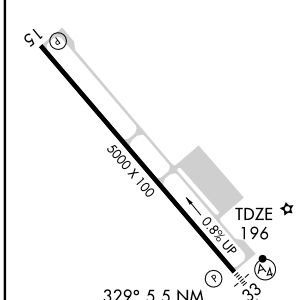


NE-3, 22 OCT 2009 to 19 NOV 2009

NE-3, 22 OCT 2009 to 19 NOV 2009

ALTERNATE MISSED APCH FIX
 SHANNON
 EZF 237

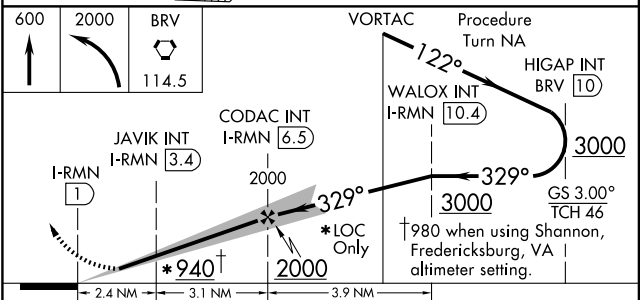
ELEV 212



REIL Rwy 15
 HIRL Rwy 15-33 **0**

FAF to MAP 5.5 NM

Knots	60	90	120	150	180
Min:Sec	5:30	3:40	2:45	2:12	1:50



CATEGORY	A	B	C	D
S-ILS 33		396- ³ / ₄	200 (200- ³ / ₄)	
S-LOC 33		580- ³ / ₄	384 (400- ³ / ₄)	580-1 ¹ / ₄ 384 (400-1 ¹ / ₄)
CIRCLING	720-1 508 (600-1)	740-1 528 (600-1)	840-1 ³ / ₄ 628 (700-1 ³ / ₄)	860-2 648 (700-2)