

RNAV (GPS) RWY 3

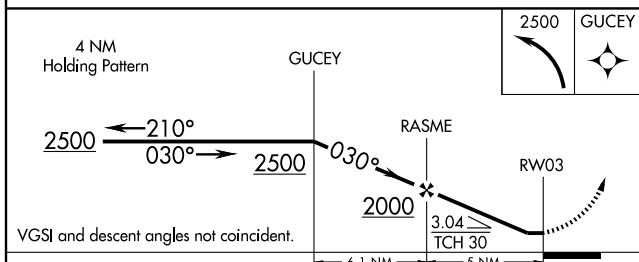
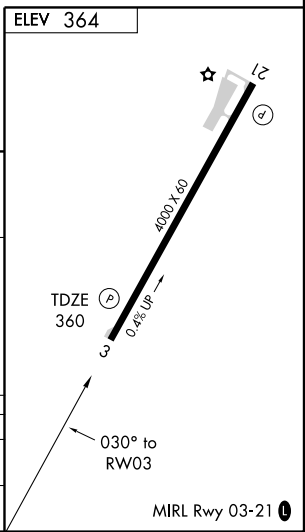
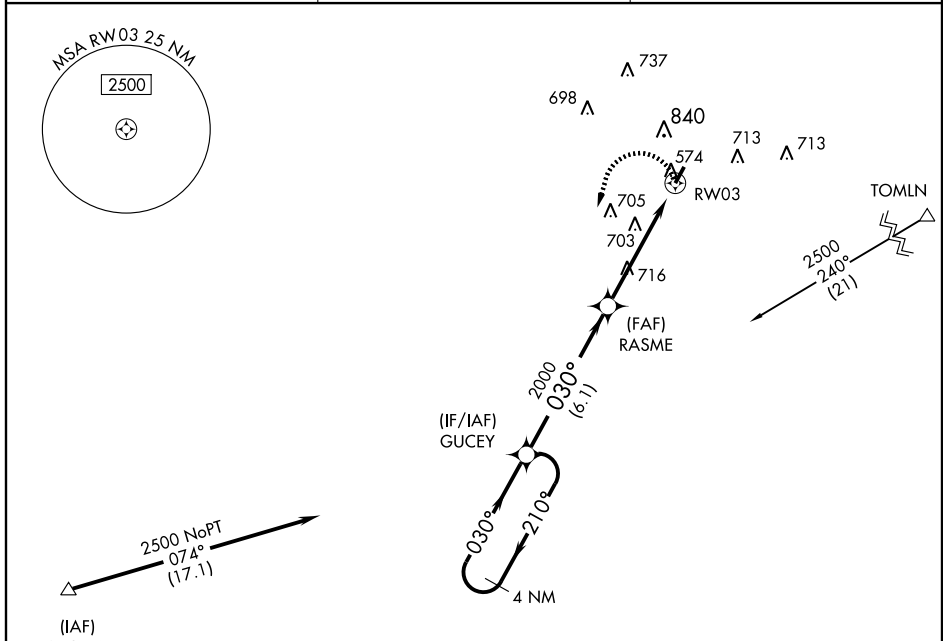
WINONA-MONTGOMERY COUNTY (5A6)

APP CRS	Rwy Idg	4000
030°	TDZE	360
	Apt Elev	364

▽ Use Grenada altimeter setting, when not received use Greenwood altimeter setting. Visibility reduction by helicopters NA.
△ NA Procedure NA at night. Circling NA NW of Rwy 3-21.

MISSED APPROACH: Climbing left turn to 2500 direct GUCEY and hold.

GRENADA AWOS 118.025	MEMPHIS CENTER 128.5 279.55	CTAF 122.9
--------------------------------	---------------------------------------	----------------------



CATEGORY	A	B	C	D
LNVA MDA	1100-1 740 (800-1)		1100-2 740 (800-2)	NA
CIRCLING	1100-1 736 (800-1)		1100-2 736 (800-2)	NA

SC-4, 22 OCT 2009 to 19 NOV 2009

SC-4, 22 OCT 2009 to 19 NOV 2009