

RNAV (GPS) RWY 21

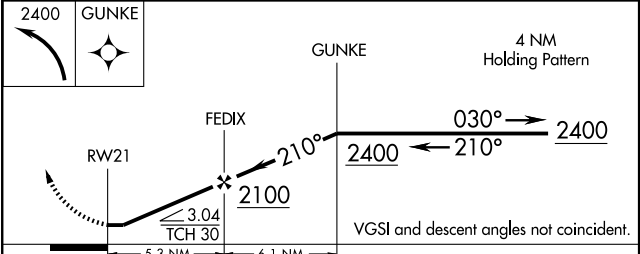
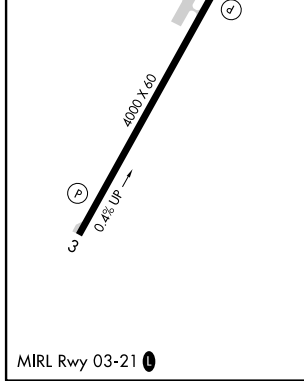
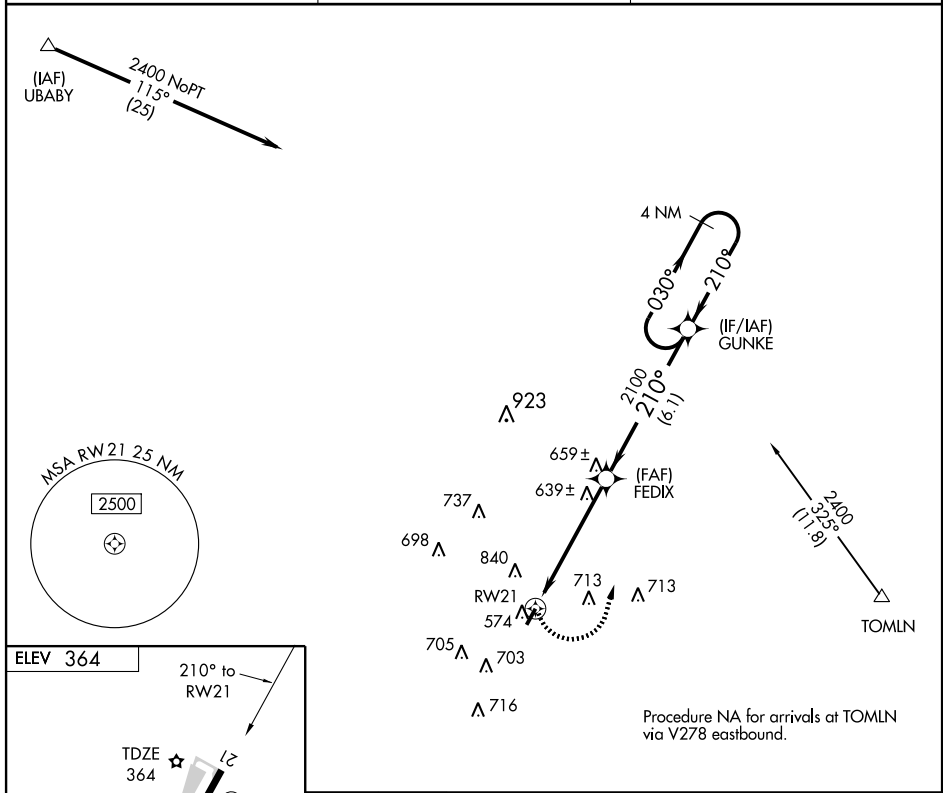
WINONA-MONTGOMERY COUNTY (5A6)

APP CRS 210°	Rwy Idg 4000
	TDZE 364
	Apt Elev 364

▽ Use Grenada altimeter setting, when not received use Greenwood altimeter setting. Visibility reduction by helicopters NA.
△ NA Procedure NA at night. Circling NA NW of Rwy 3-21.

MISSED APPROACH: Climbing left turn to 2400 direct GUNKE and hold.

GRENADA AWOS 118.025	MEMPHIS CENTER 128.5 279.55	CTAF 122.9
--------------------------------	---------------------------------------	----------------------



CATEGORY	A	B	C	D
RNAV MDA	980-1	616 (700-1)	980-1 ³ / ₄ 616 (700-1 ³ / ₄)	NA
CIRCLING	980-1	616 (700-1)	980-1 ³ / ₄ 616 (700-1 ³ / ₄)	NA

SC-4, 22 OCT 2009 to 19 NOV 2009

SC-4, 22 OCT 2009 to 19 NOV 2009