

BATESVILLE, MISSISSIPPI

AL-9738 (FAA)

LOC/DME I-PMU <b>110.35</b> Chan 40(Y)	APP CRS <b>189°</b>	Rwy Idg TDZE <b>221</b> Apt Elev <b>221</b>	<b>5000</b>
--	------------------------	---	-------------

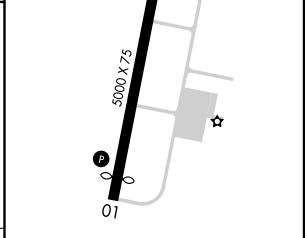
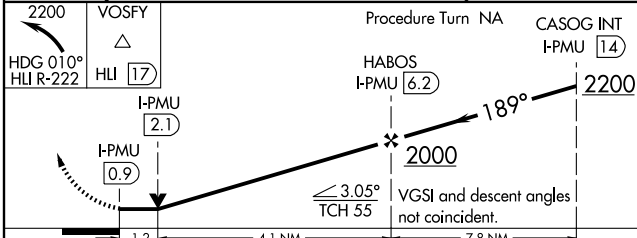
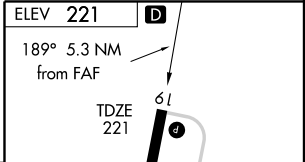
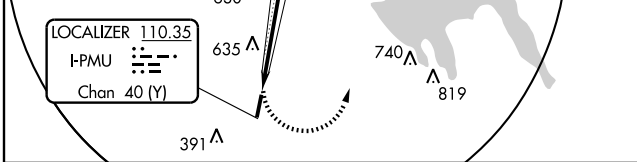
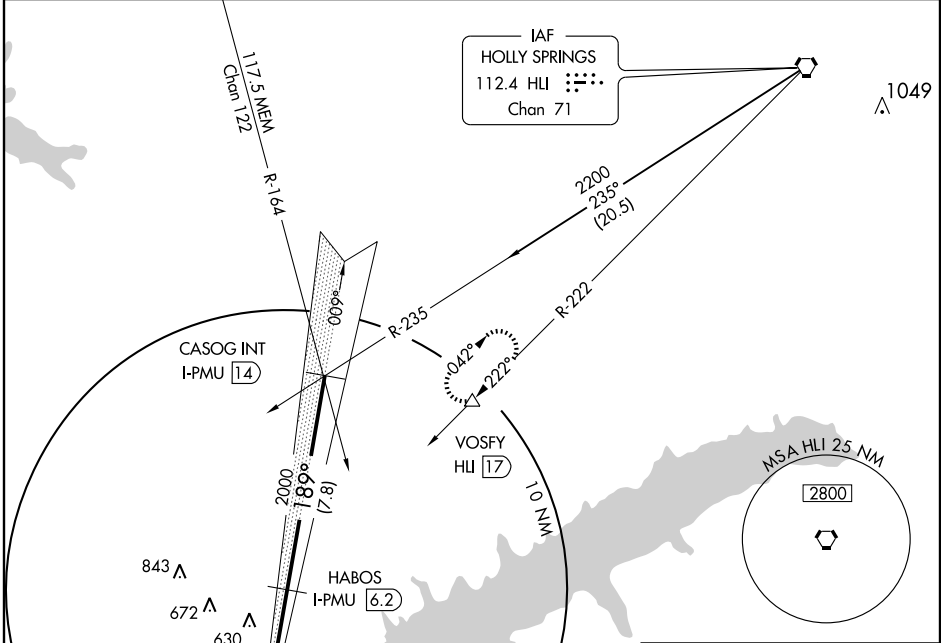
# LOC/DME RWY 19

BATESVILLE/ PANOLA COUNTY (PMU)

**NA** If local altimeter setting not received, use Oxford altimeter setting and increase all MDAs 80 feet.  
VDP NA with Oxford altimeter setting.

**MISSED APPROACH:** Climbing left turn to 2200 via heading 010° and HLI R-222 to VOSFY/17 DME and hold.

AWOS-3 <b>118.225</b>	MEMPHIS CENTER <b>128.5 381.4</b>	UNICOM <b>122.8 (CTAF)</b>
--------------------------	--------------------------------------	-------------------------------



CATEGORY	A	B	C	D
S-19	760-1	540 (600-1)	760-1½ 540 (600-1½)	760-1¾ 540 (600-1¾)
CIRCLING	760-1	539 (600-1)	940-2 719 (800-2)	940-2¼ 719 (800-2¼)

BATESVILLE, MISSISSIPPI  
Orig 09015

34°22'N-89°54'W

# BATESVILLE/ PANOLA COUNTY (PMU) LOC/DME RWY 19

SC-4, 22 OCT 2009 to 19 NOV 2009

SC-4, 22 OCT 2009 to 19 NOV 2009

MRL Rwy 1-19