

MARSHALL, ALASKA

AL-9736 (FAA)

RNAV (GPS)-A

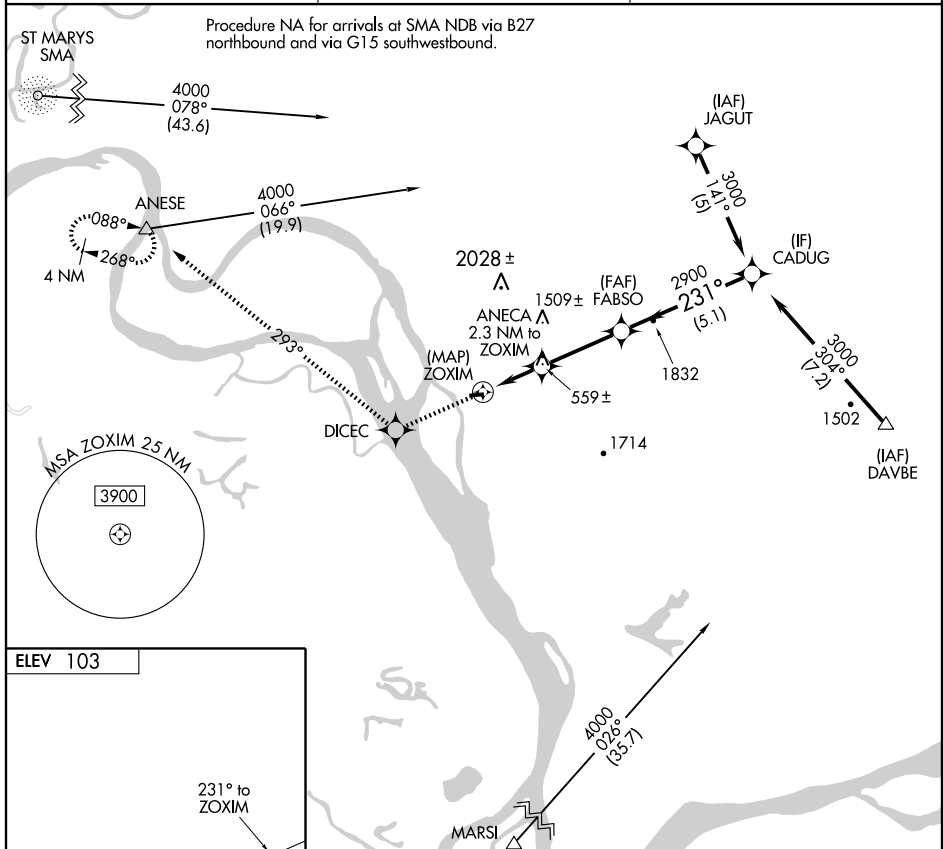
MARSHALL DON HUNTER SR (MDM)(PADM)

APP CRS 231°	Rwy Idg TDZE Apt Elev	N/A N/A 103
------------------------	-----------------------------	--

⚠ When local altimeter setting not received, use Russian Mission altimeter setting and increase all MDAs 60 feet and Cat B visibility ¼ mile. DME/DME RNP-0.3 NA.

⚠ MISSED APPROACH: Climb to 4000 direct DICEC and via 293° track to ANESE and hold, continue climb-in-hold to 4000.

ASOS 119.675	ANCHORAGE CENTER 124.0	CTAF 122.9
------------------------	----------------------------------	----------------------



4000	DICEC	293° TRK	ANESE	
ANECA 2.3 NM to ZOXIM				FABSO
ZOXIM	1720	2900	231°	CADUG 3000
2.3 NM		3.1 NM		5.1 NM
CATEGORY	A	B	C	D
CIRCLING	820-1 717 (800-1)	1020-1¼ 917 (1000-1¼)	NA	

Procedure Turn NA

MARSHALL, ALASKA
Amdt 1 09183

MARSHALL DON HUNTER SR (MDM)(PADM)
RNAV (GPS)-A
61° 52' N-162° 02' W

AK, 22 OCT 2009 to 17 DEC 2009

AK, 22 OCT 2009 to 17 DEC 2009