

MARSHALL, ALASKA

AL-9736 (FAA)

RNAV (GPS) RWY 7

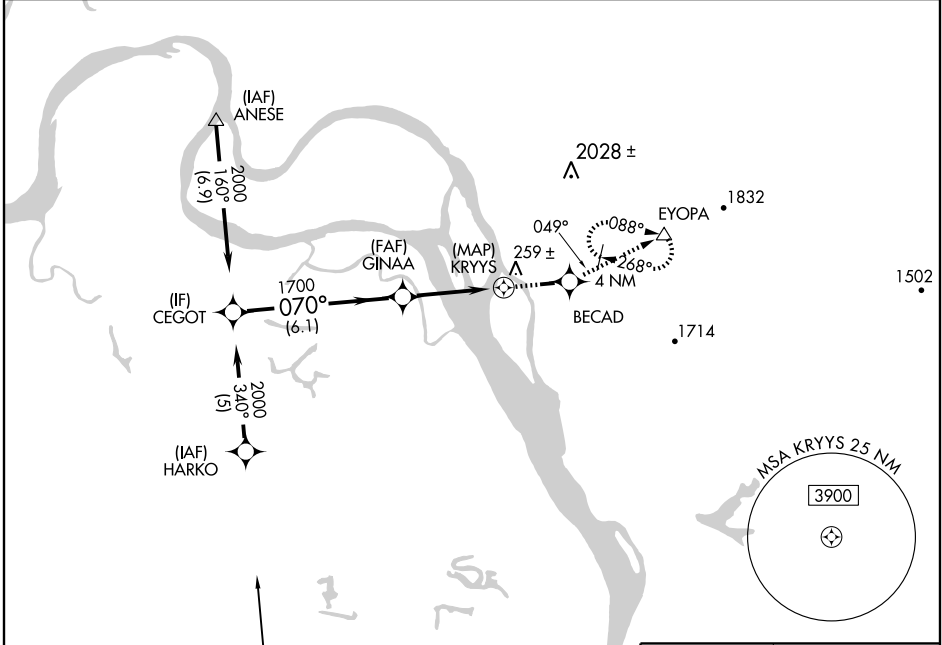
MARSHALL DON HUNTER SR (MDM) (PADM)

APP CRS 070°	Rwy Idg 3201
	TDZE 102
	Apt Elev 103

⚠ When local altimeter setting not received, use Russian Mission altimeter setting and increase all MDAs 60 feet.
⚠ DME/DME RNP-0.3 NA.

MISSED APPROACH: Climb to 4000 direct BECAD and via 049° track to EYOPA and hold, continue climb-in-hold to 4000.

ASOS 119.675	ANCHORAGE CENTER 124.0	CTAF 122.9
------------------------	----------------------------------	----------------------

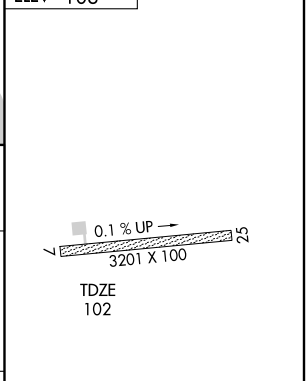
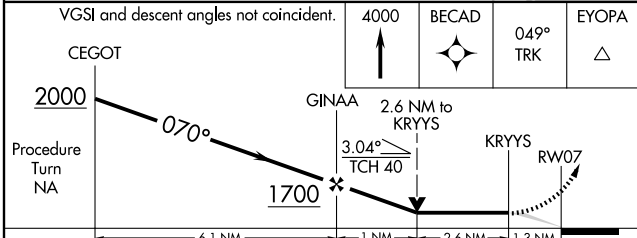


AK, 22 OCT 2009 to 17 DEC 2009

AK, 22 OCT 2009 to 17 DEC 2009

Procedure NA for arrivals at MARS via V506 southbound.

ELEV 103



CATEGORY	A	B	C	D
LNVA MDA	1340-1½	1238 (1300-1½)	NA	
CIRCLING	1340-1½	1237 (1300-1½)	NA	

REIL Rwy 7 **⓪**
MIRL Rwy 7-25 **⓪**

MARSHALL, ALASKA
Amdt 1 09183

61° 52' N-162° 02' W

MARSHALL DON HUNTER SR (MDM) (PADM)

RNAV (GPS) RWY 7