

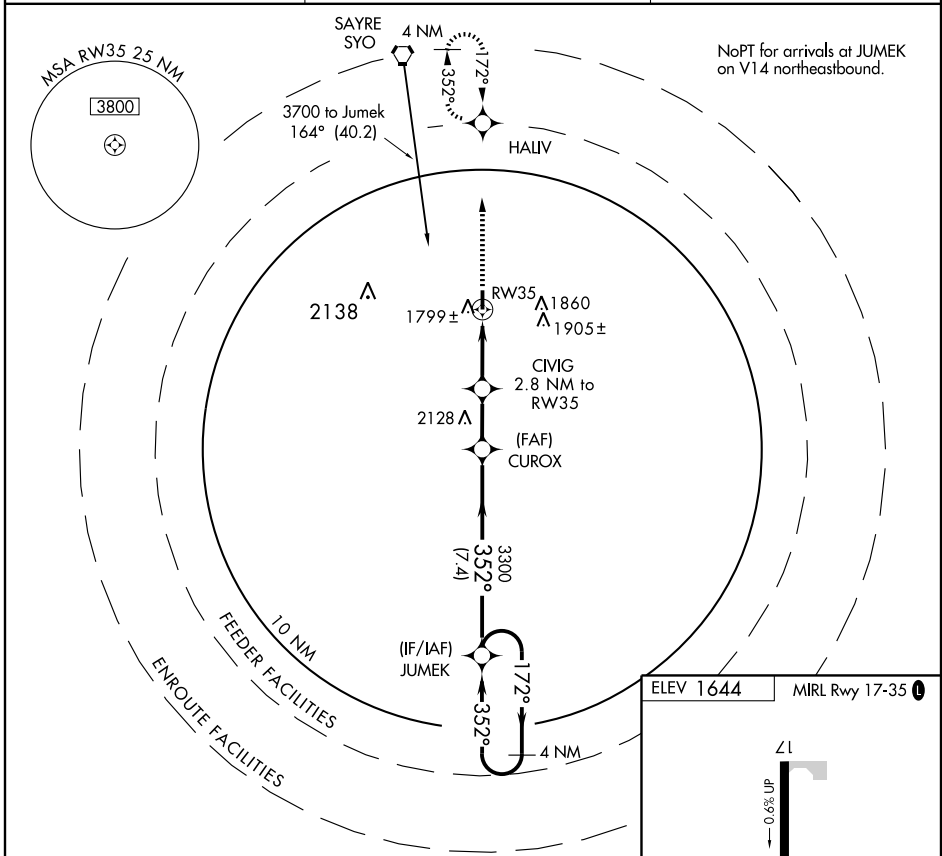
RNAV (GPS) RWY 35

MANGUM/ SCOTT FIELD (2K4)

APP CRS	Rwy Idg	4200
352°	TDZE	1643
	Apt Elev	1644

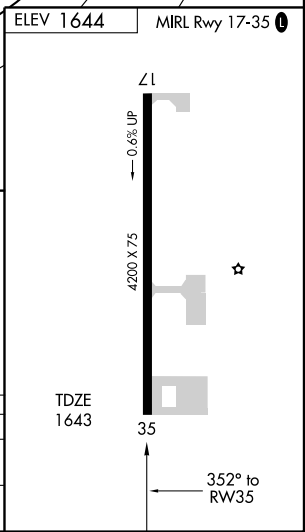
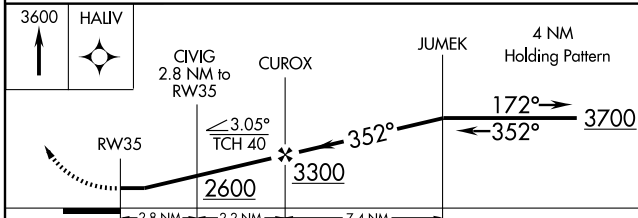
▲ NA Use Hobart Rgnl altimeter setting; if not received, use Frederick Muni altimeter setting and increase all MDAs 100 feet. DME/DME RNP-0.3 NA. MISSED APPROACH: Climb to 3600 direct HALIV and hold.

HOBART ASOS 133.325	ALTUS APP CON* 125.1 257.725	CTAF 122.9
-------------------------------	--	----------------------



SC-1, 22 OCT 2009 to 19 NOV 2009

SC-1, 22 OCT 2009 to 19 NOV 2009



CATEGORY	A	B	C	D
LNVA MDA	2160-1 517 (600-1)		2160-1½ 517 (600-1½)	NA
CIRCLING	2220-1 576 (600-1)		2220-1½ 576 (600-1½)	NA