

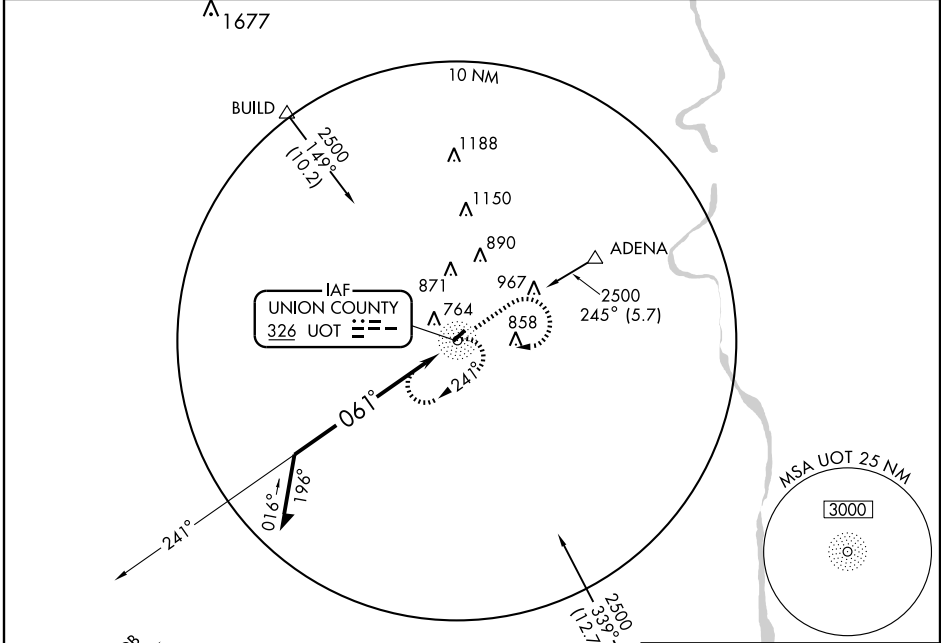
# NDB RWY 5

UNION COUNTY-TROY SHELTON FIELD (35A)

NDB UOT <b>326</b>	APP CRS <b>061°</b>	Rwy Idg <b>3508</b>
		TDZE <b>605</b>
		Apt Elev <b>605</b>

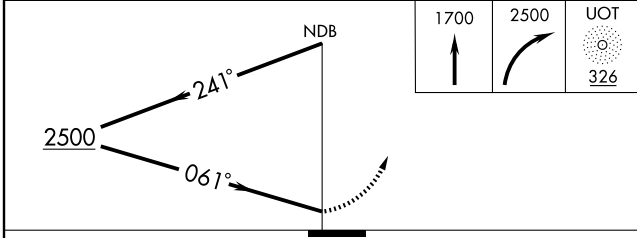
<p>▼ ▲ NA</p> <p>Use Greer altimeter setting.</p>	<p>MISSED APPROACH: Climb to 1700 then climbing right turn to 2500 direct UOT NDB and hold.</p>
---	---

<p>GREER APP CON ★ <b>119.4 350.2</b></p>	<p>UNICOM <b>122.7 (CTAF) 0</b></p>
---	---

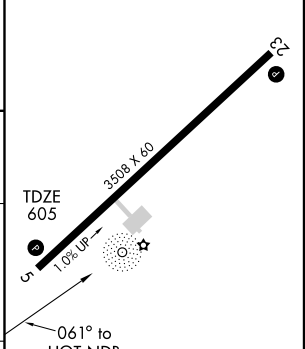


GREENWOOD  
115.5 GRD  
Chan 102

ELEV 605



1700	2500	UOT
↑	↷	○
		326



CATEGORY	A	B	C	D
S-5	1360-1 755 (800-1)	1360-1¼ 755 (800-1¼)		NA
CIRCLING	1360-1 755 (800-1)	1360-1¼ 755 (800-1¼)		NA

MIRL Rwy 5-23 0

Knots	60	90	120	150	180
Min:Sec					

# NDB RWY 5

SE-2, 22 OCT 2009 to 19 NOV 2009

SE-2, 22 OCT 2009 to 19 NOV 2009