

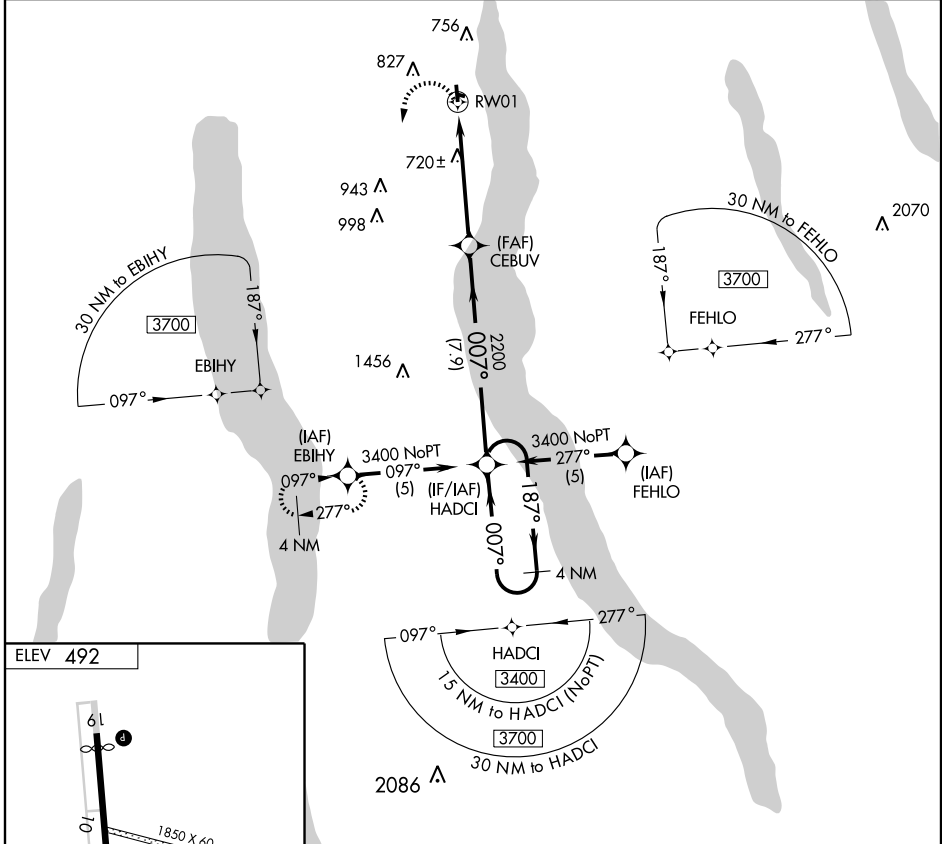
RNAV (GPS) RWY 1

SENECA FALLS / FINGER LAKES RGNL (ØG7)

APP CRS 007°	Rwy Idg TDZE Apt Elev	3786 492 492
------------------------	-----------------------------	---

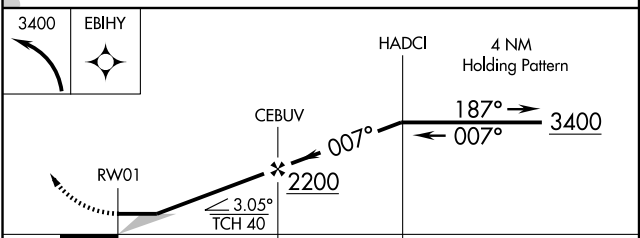
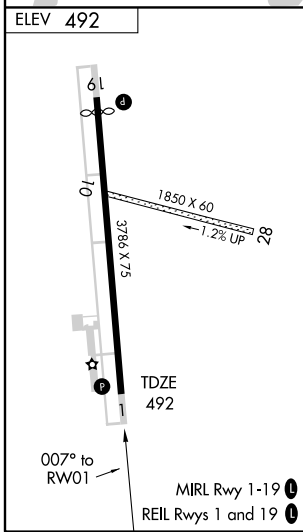
<p>▼ Use Syracuse Hancock Intl altimeter setting. ▲ NA GPS or RNP-0.3 required. DME/DME RNP-0.3 NA.</p>	<p>MISSED APPROACH: Climbing left turn to 3400 direct EBIHY WP and hold.</p>
---	--

AWOS-3 120.0	SYRACUSE APP CON 126.125 269.125 (E-NE)	ROCHESTER APP CON 119.55 269.6 (W-NW)	ELMIRA APP CON ★ 124.3 257.8 (SW-SE)	UNICOM 122.8 (CTAF) Ø
------------------------	---	---	--	--



NE-2, 22 OCT 2009 to 19 NOV 2009

NE-2, 22 OCT 2009 to 19 NOV 2009



CATEGORY	A	B	C	D
LNAY MDA	1060-1	568 (600-1)		NA
CIRCLING	1080-1	588 (600-1)		NA