

# RNAV (GPS) RWY 12

CANBY/MYERS FIELD (CNB)

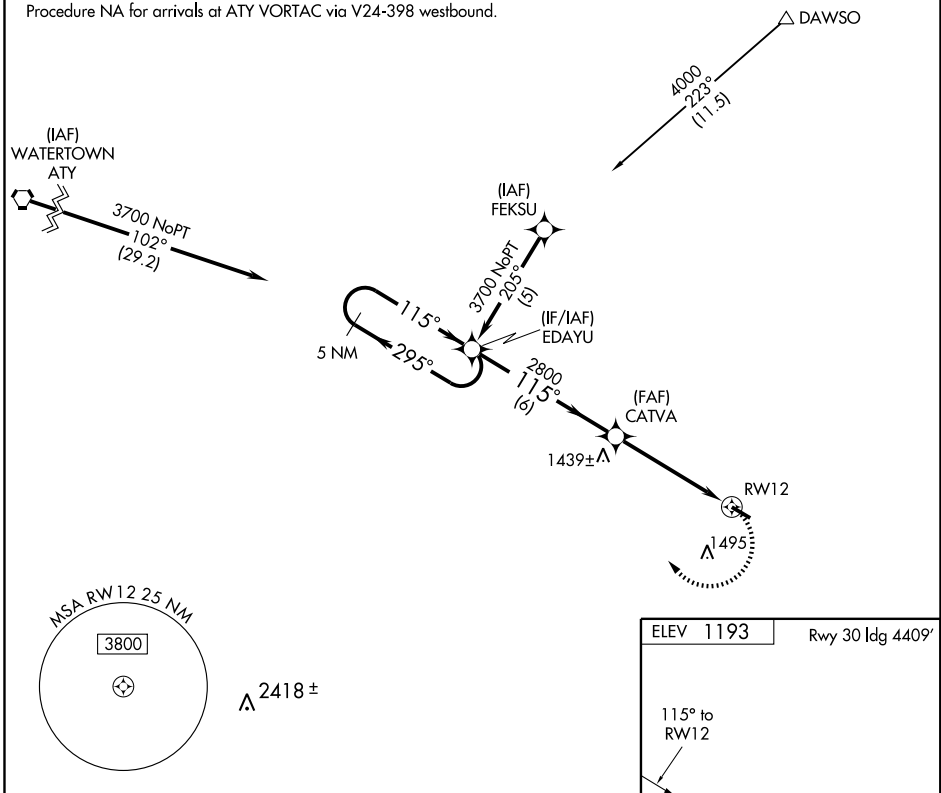
APP CRS <b>115°</b>	Rwy Idg <b>4648</b>
	TDZE <b>1193</b>
	Apt Elev <b>1193</b>

**▽** DME/DME RNP-0.3 NA.  
**▲** VDP NA when using Lac Qui Parle County altimeter setting.  
 If local altimeter setting not received, use Lac Qui Parle County altimeter setting and increase all MDAs 60 feet.

MISSED APPROACH: Climbing right turn to 3700 direct EDAYU and hold.

AWOS-3 <b>118.575</b>	MINNEAPOLIS CENTER <b>128.5 306.2</b>	GCO <b>121.725</b>	CTAF <b>122.9 0</b>
--------------------------	--	-----------------------	------------------------

Procedure NA for arrivals at ATY VORTAC via V24-398 westbound.



NC-1, 22 OCT 2009 to 19 NOV 2009

NC-1, 22 OCT 2009 to 19 NOV 2009

5 NM Holding Pattern		EDAYU		3700 EDAYU	
3700 ← 295°		→ 115°		115°	
VGS1 and descent angles not coincident.		2800		3.04° TCH 40	
		1.5 NM to RWY 12		RWY 12	
		6 NM		3.4 NM	
				1.5 NM	
CATEGORY	A	B	C	D	
RNAV MDA	1700-1	507 (600-1)		NA	
CIRCLING	1700-1	507 (600-1)		NA	

ELEV 1193	Rwy 30 Idg 4409'
115° to RWY 12	
TDZE 1193	4648 X 75
MIRL Rwy 12-30 0	
REIL Rwys 12 and 30 0	