

LEXINGTON, OREGON

AL-9524 (FAA)

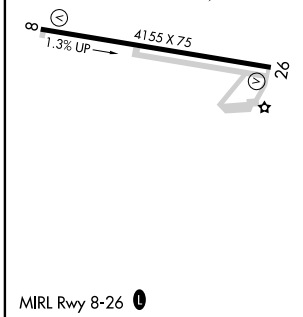
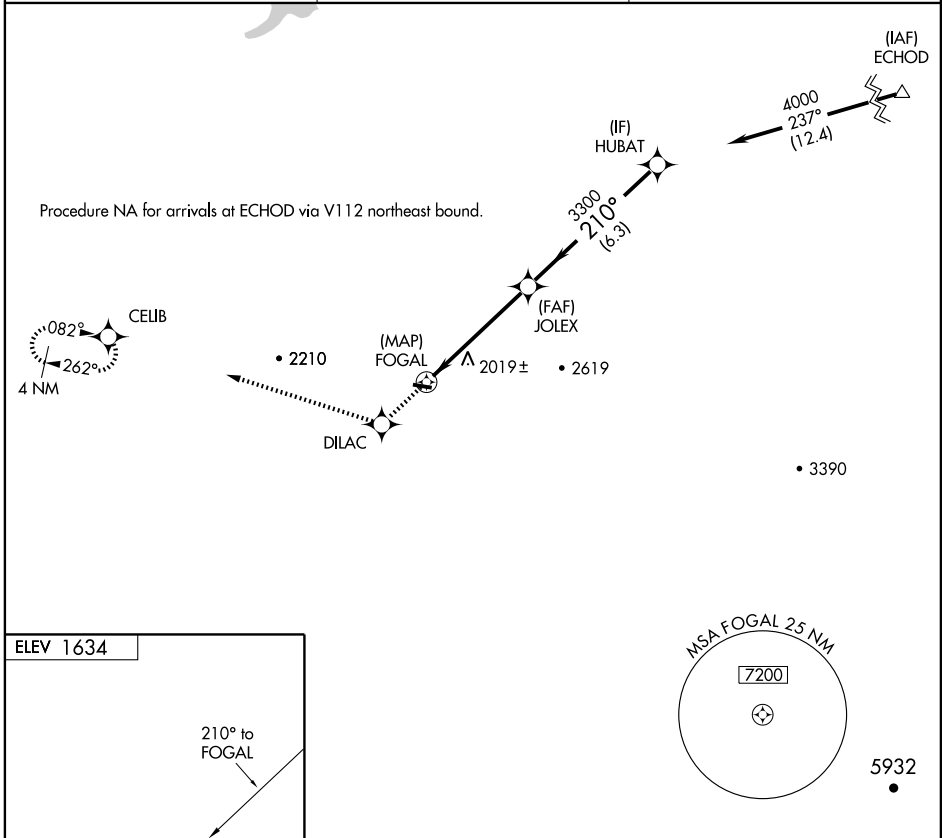
# RNAV (GPS)-A LEXINGTON (9S9)

APP CRS <b>210°</b>	Rwy Idg TDZE Apt Elev	<b>N/A</b> <b>N/A</b> <b>1634</b>
------------------------	-----------------------------	---

**NA** If local altimeter setting not received, use Hermiston altimeter setting and increase all MDAs 220 feet. Procedure NA at night. GPS or RNP-0.3 required. DME/DME RNP-0.3 NA.

**MISSED APPROACH:** Climb to 4400 direct DILAC WP and via 271° track to CELIB WP and hold.

AWOS-3 <b>134.475</b>	SEATTLE CENTER <b>132.6 269.35</b>	CTAF <b>122.9</b>
--------------------------	---------------------------------------	----------------------



4400	DILAC	271° track	CELIB	HUBAT
				4000
	FOGAL	JOLEX		Procedure Turn NA
		3300		
	5 NM	6.3 NM		
CATEGORY	A	B	C	D
CIRCLING	2380-1 746 (800-1)	2460-1¼ 826 (900-1¼)	2480-2½ 846 (900-2½)	2520-3 886 (900-3)

LEXINGTON, OREGON  
Orig 08157

45°27'N-119°41'W

# LEXINGTON (9S9) RNAV (GPS)-A

NW-1, 22 OCT 2009 to 19 NOV 2009

NW-1, 22 OCT 2009 to 19 NOV 2009