

RNAV (GPS) RWY 8

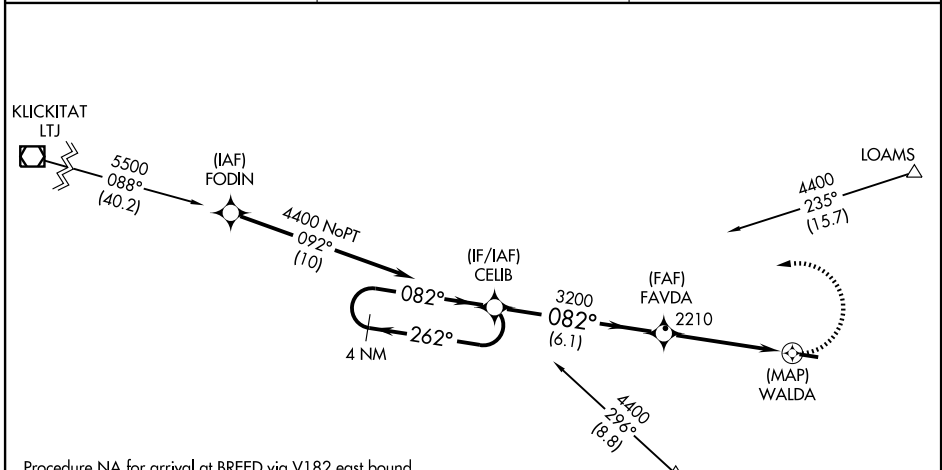
LEXINGTON (9S9)

APP CRS	Rwy Idg	4155
082°	TDZE	1613
	Apt Elev	1634

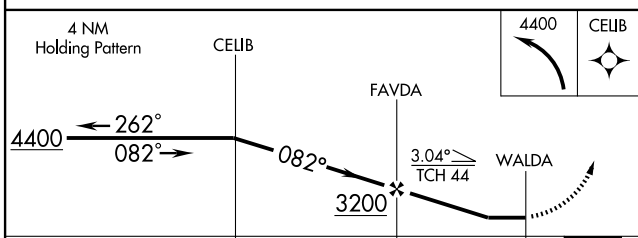
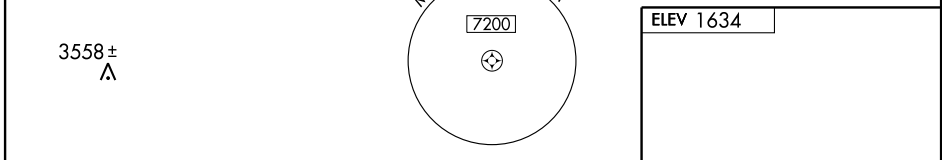
⚠ If local altimeter setting not received, use Hermiston altimeter setting and increase all MDAs 220 feet.
⚠ NA Procedure NA at night.
 GPS or RNP-0.3 required. DME/DME RNP-0.3 NA.

MISSED APPROACH: Climbing left turn to 4400 direct CELIB WP and hold.

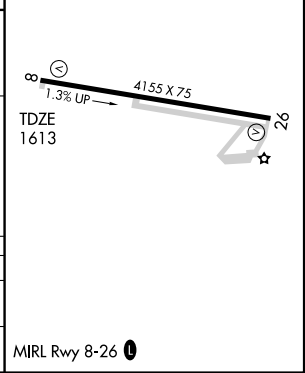
AWOS-3 134.475	SEATTLE CENTER 132.6 269.35	CTAF 122.9
--------------------------	---------------------------------------	----------------------



Procedure NA for arrival at BREED via V182 east bound.
 Procedure NA for arrival at LOAMS via V112 northeast bound.
 Procedure NA for arrival on LTJ VOR/DME airway radials 032 CW 116.



CATEGORY	A	B	C	D
LNVA MDA	2120-1	507 (500-1)	2120-1½	507 (500-1½)
CIRCLING	2380-1 746 (800-1)	2460-1¼ 826 (900-1¼)	2480-2½ 846 (900-2½)	2520-3 886 (900-3)



NW-1, 22 OCT 2009 to 19 NOV 2009

NW-1, 22 OCT 2009 to 19 NOV 2009