

TUNICA, MISSISSIPPI

AL-9521 (FAA)

RNAV (GPS) RWY 35

TUNICA MUNI (UTA)

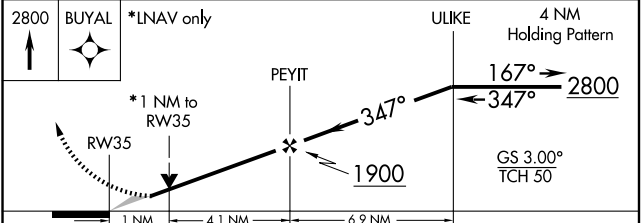
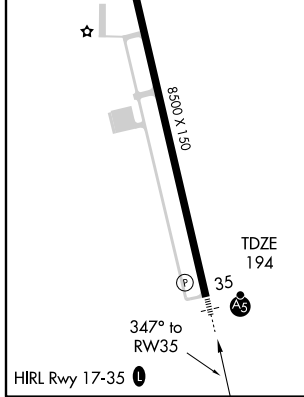
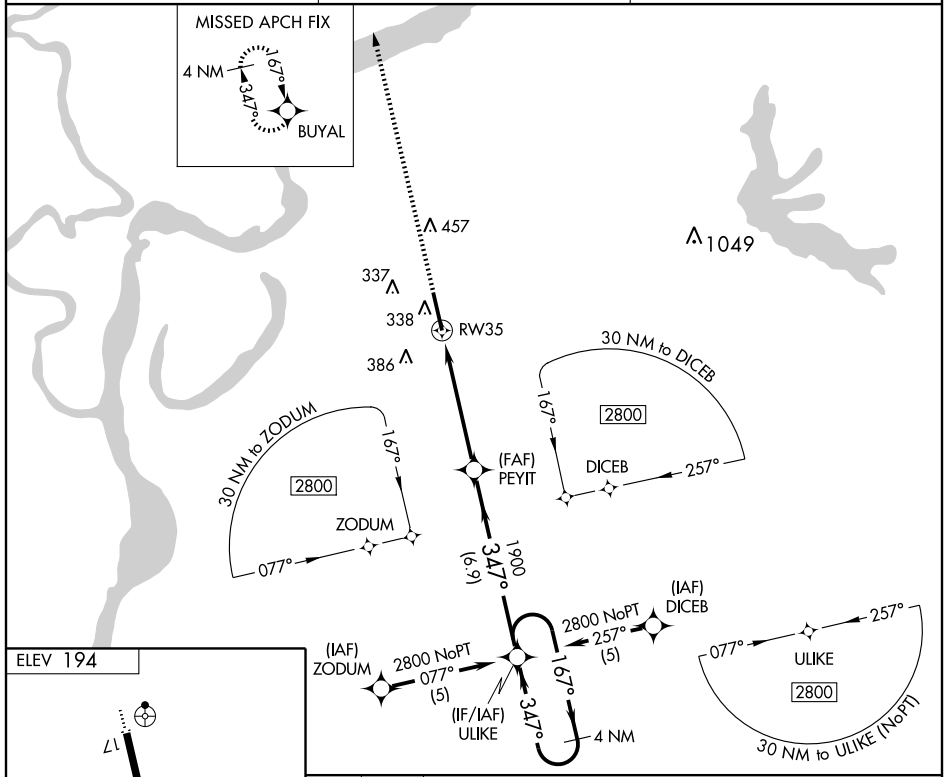
WAAS CH 60912 W35A	APP CRS 347°	Rwy Idg TDZE Apt Elev	8500 194 194
--	------------------------	-----------------------------	---

▼ DME/DME RNP-0.3 NA. If local altimeter setting not received, use Memphis altimeter setting and increase all DA/MDAs 100 feet. VDP NA when using Memphis altimeter setting.
▲ For inoperative MALS/R, increase LPV all Cats visibility to 3/4 and LNAV Cat D visibility to 1/4.



MISSED APPROACH:
Climb to 2800 direct BUYAL and hold.

AWOS-3 118,075	MEMPHIS APP CON 119.1 291.6	UNICOM 123.0 (CTAF)
--------------------------	---------------------------------------	-------------------------------



CATEGORY	A	B	C	D
LPV DA	450-1/2 256 (300-1/2)			
LNAV/VNAV DA	NA			
LNAV MDA	560-1/2 366 (400-1/2)		560-1 366 (400-1)	
CIRCLING	680-1	486 (500-1)	680-1/2 486 (500-1/2)	760-2 566 (600-2)

TUNICA, MISSISSIPPI
Amdt 1 09267

34° 41' N-90° 21' W

RNAV (GPS) RWY 35

SC-4, 22 OCT 2009 to 19 NOV 2009

SC-4, 22 OCT 2009 to 19 NOV 2009