

TUNICA, MISSISSIPPI

AL-9521 (FAA)

# ILS or LOC RWY 35

TUNICA MUNI (UTA)

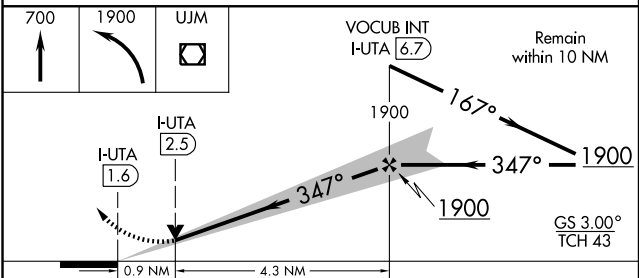
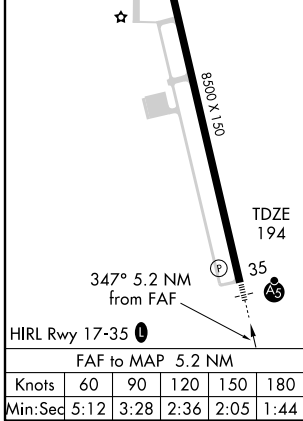
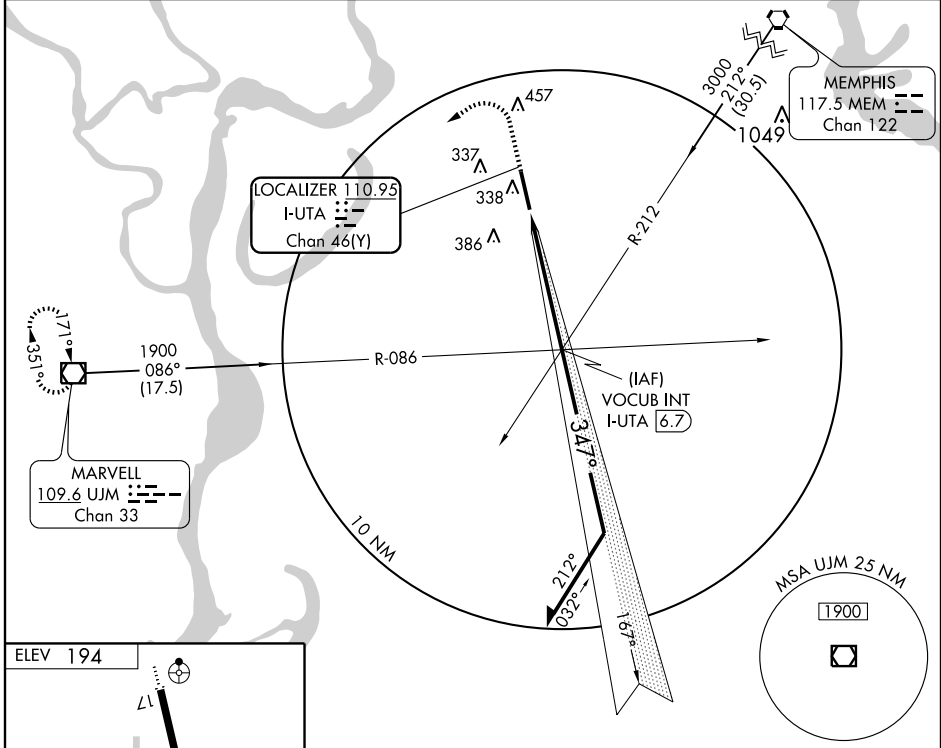
LOC/DME I-UTA <b>110.95</b> Chan <b>46(Y)</b>	APP CRS <b>347°</b>	Rwy Idg <b>8500</b> TDZE <b>194</b> Apt Elev <b>194</b>
---	------------------------	---

▼ If local altimeter setting not received, use Memphis altimeter setting and increase all DH/MDAs 100 feet.  
▲ VDP NA with Memphis altimeter setting.



MISSED APPROACH: Climb to 700 then climbing left turn to 1900 direct UJM VOR/DME and hold.

AWOS-3 <b>118,075</b>	MEMPHIS APP CON <b>119.1 291.6</b>	UNICOM <b>123.0 (CTAF) 0</b>
--------------------------	---------------------------------------	---------------------------------



CATEGORY	A	B	C	D
S-ILS 35	394-1/2 200 (200-1/2)			
S-LOC 35	540-1/2 346 (400-1/2)			540-3/4 346 (400-3/4)
CIRCLING	680-1 486 (500-1)		680-1 1/2 760-2 566 (600-2)	

TUNICA, MISSISSIPPI  
Orig 09267

34°41'N-90°21'W

# ILS or LOC RWY 35

SC-4, 22 OCT 2009 to 19 NOV 2009

SC-4, 22 OCT 2009 to 19 NOV 2009