

ROME, NEW YORK

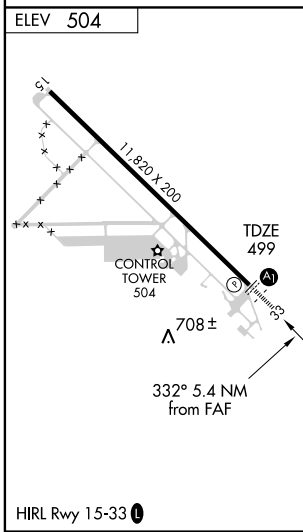
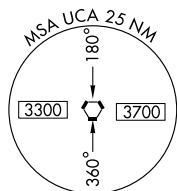
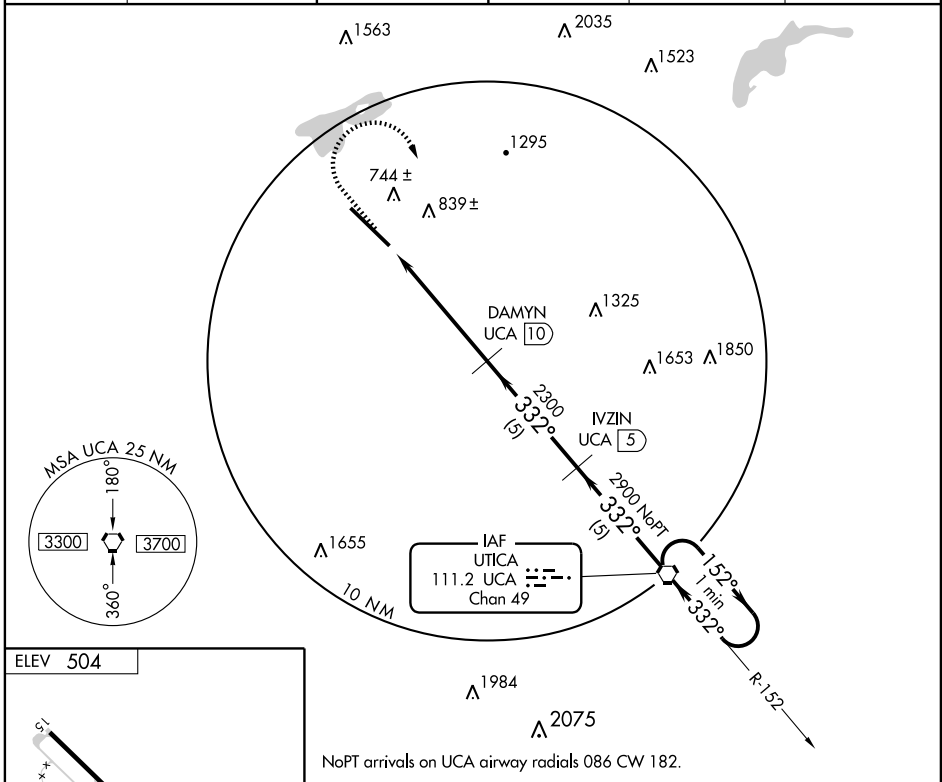
AL-9515 (FAA)

VORTAC UCA 111.2 Chan 49	APP CRS 332°	Rwy Idg TDZE Apt Elev	11,820 499 504
--	------------------------	-----------------------------	---

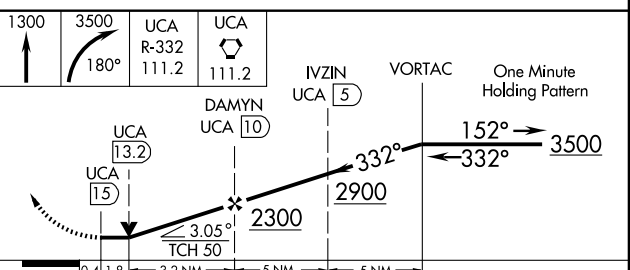
VOR/DME RWY 33

ROME/GRIFFISS INTL (RME)

Circling NA west of Rwy 15-33.		ALSF-1 	MISSED APPROACH: Climb to 1300, then climbing right turn to 3500 via heading 180° and UCA R-332 to UCA VORTAC and hold.		
ATIS 118.7	GRIFFISS APP CON 120.925 269.5	GRIFFISS TOWER ★ 118.1 291.1	GND CON 121.9 291.1	CTAF 118.1	UNICOM 122.95



NoPT arrivals on UCA airway radials 086 CW 182.



CATEGORY	A	B	C	D
S-33	1240-½ 741 (800-½)	1240-¾ 741 (800-¾)	1240-1¼ 741 (800-1¼)	1240-2 741 (800-2)
CIRCLING	1240-1 736 (800-1)	1240-1¼ 736 (800-1¼)	1240-2¼ 736 (800-2¼)	1260-2½ 756 (800-2½)

ROME, NEW YORK
Orig-A 09127

43°14'N - 75°24'W

VOR/DME RWY 33

NE-2, 22 OCT 2009 to 19 NOV 2009

NE-2, 22 OCT 2009 to 19 NOV 2009