

RNAV (GPS) RWY 15

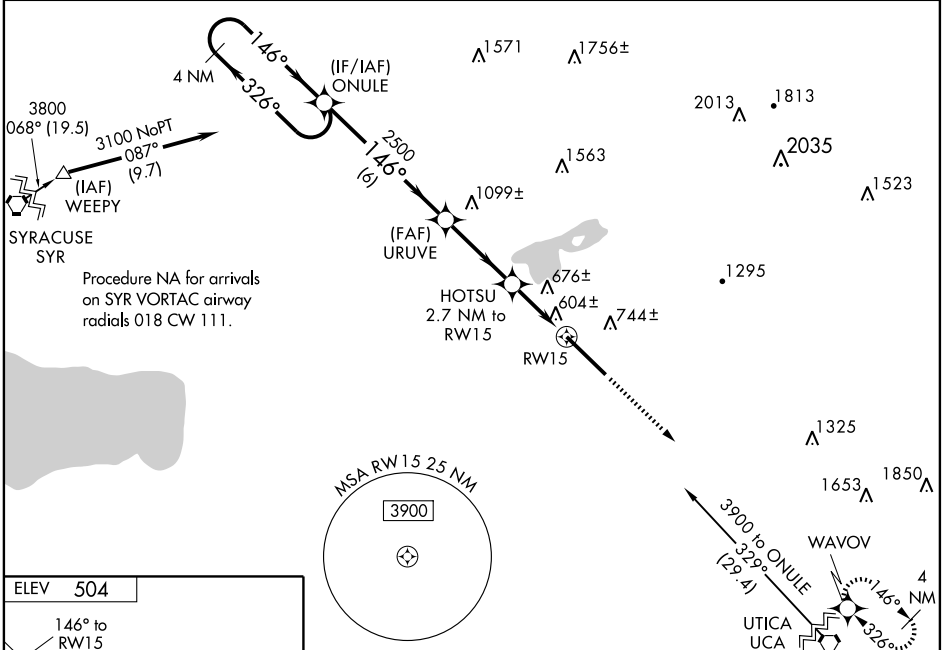
ROME/GRIFFISS INTL (RME)

WAAS CH 82206 W15A	APP CRS 146°	Rwy ldg 11820 TDZE 504 Apt Elev 504
---------------------------------	------------------------	--

⚠ Circling NA west of Rwy 15-33. Baro-VNAV NA when using Syracuse altimeter setting.
 For uncompensated Baro-VNAV systems, LNAV/VNAV NA below -16°C (4°F) or above 48°C (118°F).
 DME/DME RNP-0.3 NA. Inoperative table does not apply to LNAV/VNAV all Cats and LNAV Cat C.
 When local altimeter setting not received, use Syracuse altimeter setting and increase all DA 85 ft and all MDA 100 ft; increase LPV all Cats and LNAV/VNAV all Cats, LNAV Cats C and D, and Circling Cats B, C and D visibility ¼ mile. VDP NA when using Syracuse altimeter setting.

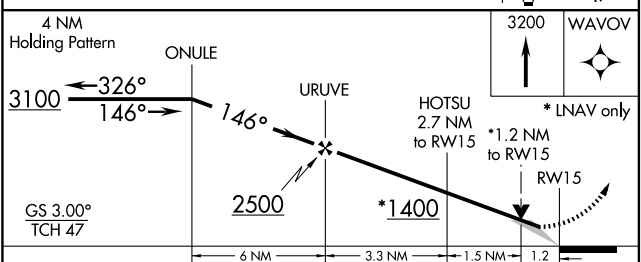
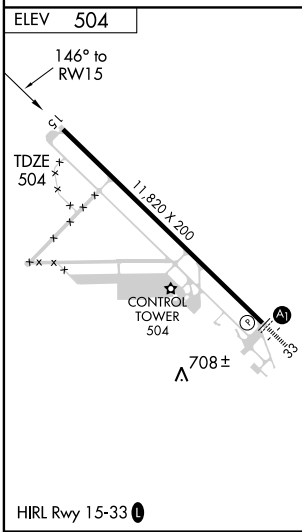
MISSED APPROACH: Climb to 3200 direct WAVOV and hold.

ATIS 118.7	GRIFFISS APP CON 120.925 269.5	GRIFFISS TOWER * 118.1 291.1	GND CON 121.9 291.1	CTAF 118.1	UNICOM 122.95
----------------------	--	--	-------------------------------	----------------------	-------------------------



NE-2, 22 OCT 2009 to 19 NOV 2009

NE-2, 22 OCT 2009 to 19 NOV 2009



CATEGORY	A	B	C	D
LPV DA		805-1	301 (400-1)	
LNAV/VNAV DA		1052-2	548 (600-2)	
LNAV MDA	940- ³ / ₄	436 (500- ³ / ₄)	940-1 ¹ / ₄ 436 (500-1 ¹ / ₄)	940-1 ¹ / ₂ 436 (500-1 ¹ / ₂)
CIRCLING	1120-1 616 (700-1)	1160-1 656 (700-1)	1200-2 696 (700-2)	1280-2 ¹ / ₂ 776 (800-2 ¹ / ₂)