

# RNAV (GPS) RWY 18

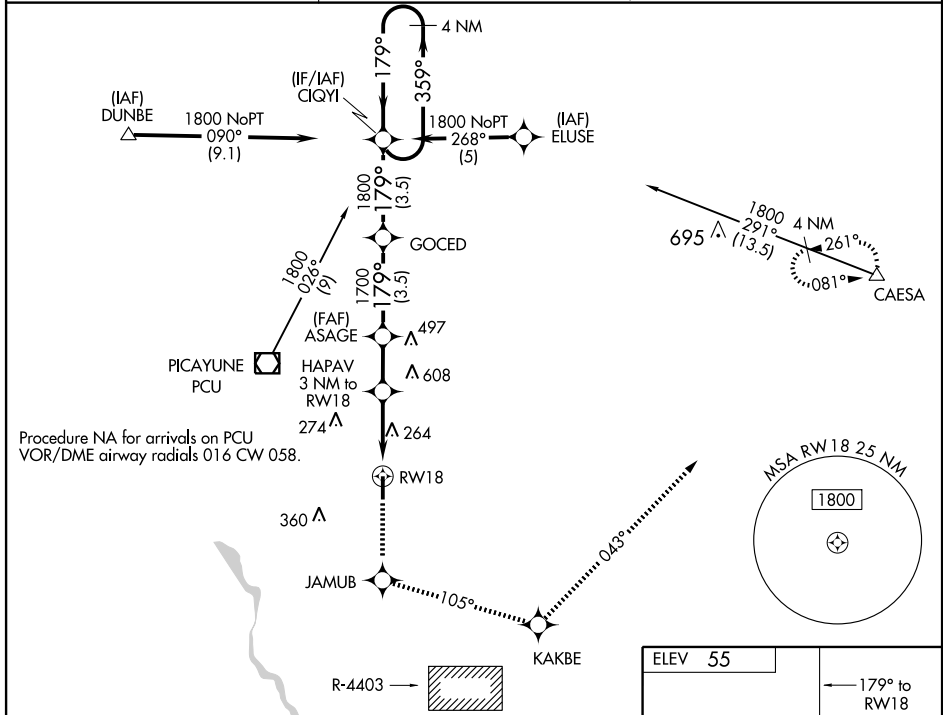
PICAYUNE MUNI (MJJD)

WAAS CH <b>99310</b> <b>W18A</b>	APP CRS <b>179°</b>	Rwy Idg <b>5000</b> TDZE <b>55</b> Apt Elev <b>55</b>
--	------------------------	---

▼ For uncompensated Baro-VNAV systems, LNAV/VNAV NA below -15°C (5°F) or above 48°C (118°F). DME/DME RNP-0.3 NA. Visibility reduction by helicopters NA. When local altimeter setting not received use Stennis Intl altimeter setting and increase all DA/MDA 40 feet and visibility LNAV Cat C ¼ mile. VDP and Baro-VNAV NA when using Stennis Intl altimeter setting.

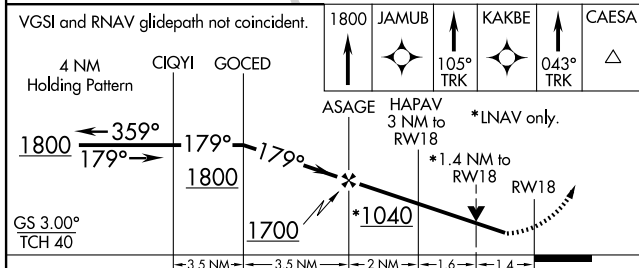
MISSED APPROACH: Climb to 1800 direct JAMUB and via 105° track to KAKBE and via 043° track to CAESA and hold.

AWOS-3 <b>119.075</b>	GULFPORT APP CON <b>124.6 354.1</b>	UNICOM <b>122.8 (CTAF) 0</b>
--------------------------	--	---------------------------------



SC-4, 22 OCT 2009 to 19 NOV 2009

SC-4, 22 OCT 2009 to 19 NOV 2009



CATEGORY	A	B	C	D
LPV DA		379-1¼	324 (400-1¼)	
LNAV/VNAV DA		586-2	531 (600-2)	
LNAV MDA	520-1	465 (500-1)	520-1¼ 465 (500-1¼)	520-1½ 465 (500-1½)
CIRCLING	520-1 465 (500-1)	580-1 525 (600-1)	580-1½ 525 (600-1½)	640-2 585 (600-2)

