

# RNAV (GPS) RWY 12

SCOBEY (9S2)

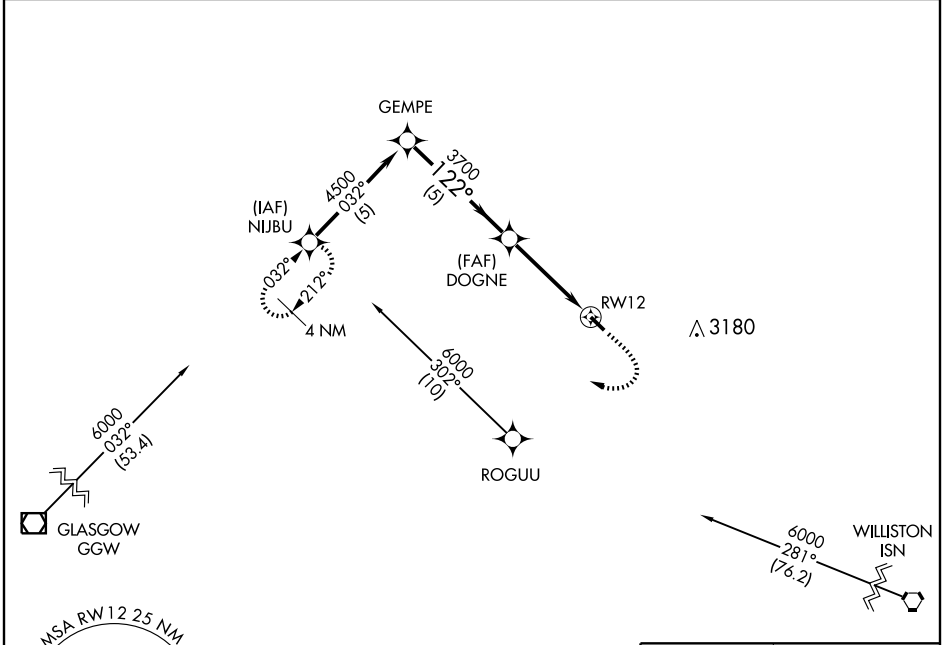
APP CRS <b>122°</b>	Rwy Idg <b>4015</b>
	TDZE <b>2385</b>
	Apt Elev <b>2432</b>

**⚠** GPS or RNP-0.3 required. DME/DME RNP-0.3 NA.  
**⚠** NA Use Wolf Point altimeter setting; when not received procedure not authorized.

MISSED APPROACH: Climb to 3600 then climbing right turn to 6000 direct NIJBU WP and hold.

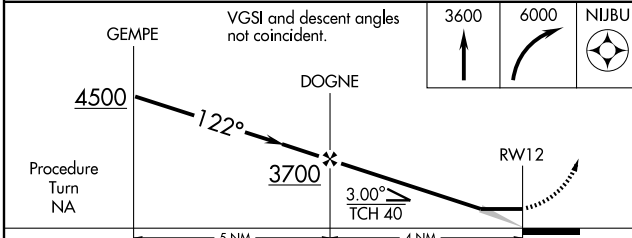
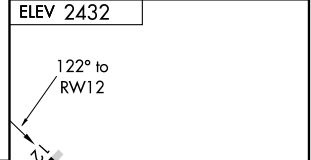
SALT LAKE CITY CENTER  
**126.85 305.2**

UNICOM  
**122.8 (CTAF)**



NW-1, 22 OCT 2009 to 19 NOV 2009

NW-1, 22 OCT 2009 to 19 NOV 2009



CATEGORY	A	B	C	D
LNVA MDA	3100-1	715 (700-1)		NA
CIRCLING	3100-1	668 (700-1)		NA

