

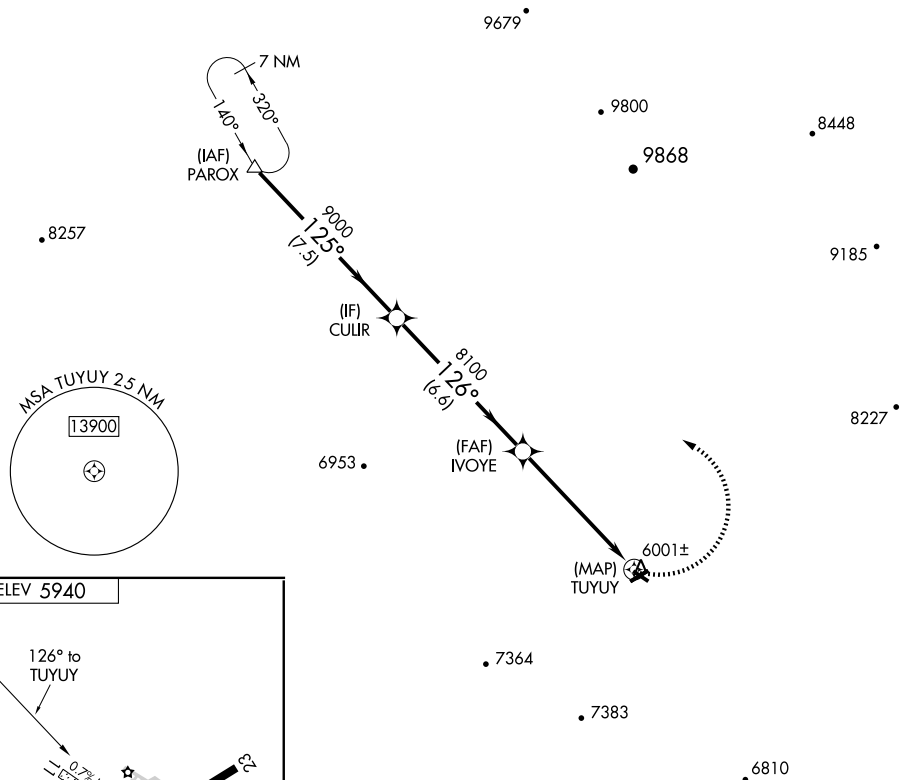
APP CRS 126°	Rwy Idg TDZE Apt Elev	N/A N/A 5940
------------------------	-----------------------------	---

RNAV (GPS)-A
NUCLA/HOPKINS FIELD (AIB)

▽ DME/DME RNP- 0.3 NA. If local altimeter setting not received, procedure NA.	△ NA	MISSED APPROACH: Climbing left turn to 12000 direct PAROX and hold, continue climb-in-hold to 12000.
---	-------------	--

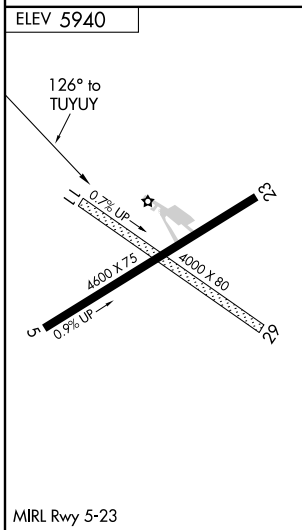
AWOS-3 132.525	DENVER CENTER 125.35 354.05	UNICOM 122.8 (CTAF)
--------------------------	---------------------------------------	-------------------------------

NoPT for arrival at PAROX on V391 southbound.
All arrivals via V244 descend to 12000 in PAROX holding pattern before departing PAROX.



SW-1, 22 OCT 2009 to 19 NOV 2009

SW-1, 22 OCT 2009 to 19 NOV 2009



	PAROX	CULIR	IVOYE	TUYUY
	12000	9000	8100	
Procedure Turn NA				
	7.5 NM		6.6 NM	5.8 NM
CATEGORY	A	B	C	D
CIRCLING	6600-1	660 (700-1)	6600-1¾ 660 (700-1¾)	NA