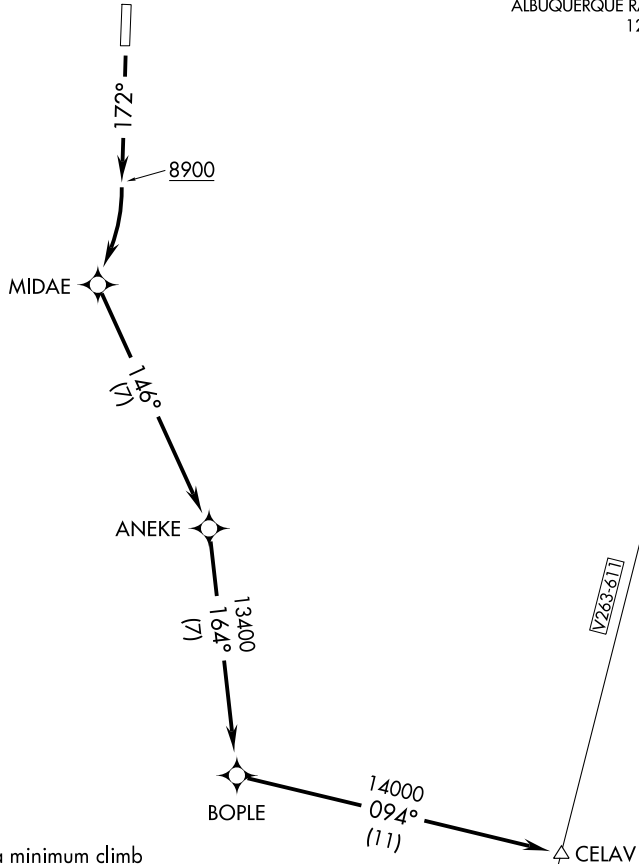


ANEKE TWO DEPARTURE (RNAV) (OBSTACLE)

ANGEL FIRE (AXX)
ANGEL FIRE, NEW MEXICO

AWOS-3 118.025
ALBUQUERQUE CENTER
132.8 346.35
ALBUQUERQUE RADIO
122.55



SW-1, 22 OCT 2009 to 19 NOV 2009

SW-1, 22 OCT 2009 to 19 NOV 2009

TAKE-OFF MINIMUMS

Rwy 17: Standard with a minimum climb of 526' per NM to 12300.

Rwy 35: NA- obstacles.

NOTE: Do not exceed 250 KIAS until BOPL E.

NOTE: GPS required.

NOTE: RNAV 1

NOTE: Rwy 17, road 74' from DER, 481' right of centerline, 15' AGL/8414' MSL.

NOTE: Chart not to scale.



DEPARTURE ROUTE DESCRIPTION

TAKE-OFF RUNWAY 17: Climb heading 172° to 8900, then climbing right turn to 14000 direct MIDA E, then via 146° track to ANEKE, then via 164° track to BOPL E, then via 094° track to CELAV.