

# RNAV (GPS) RWY 34

WILLITS/ELLS FIELD-WILLITS MUNI (O28)

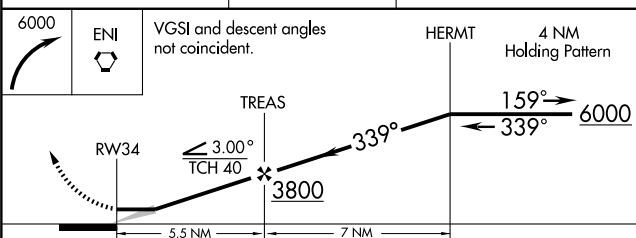
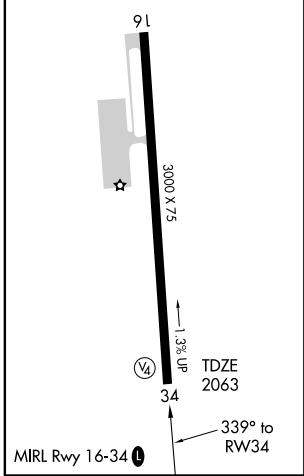
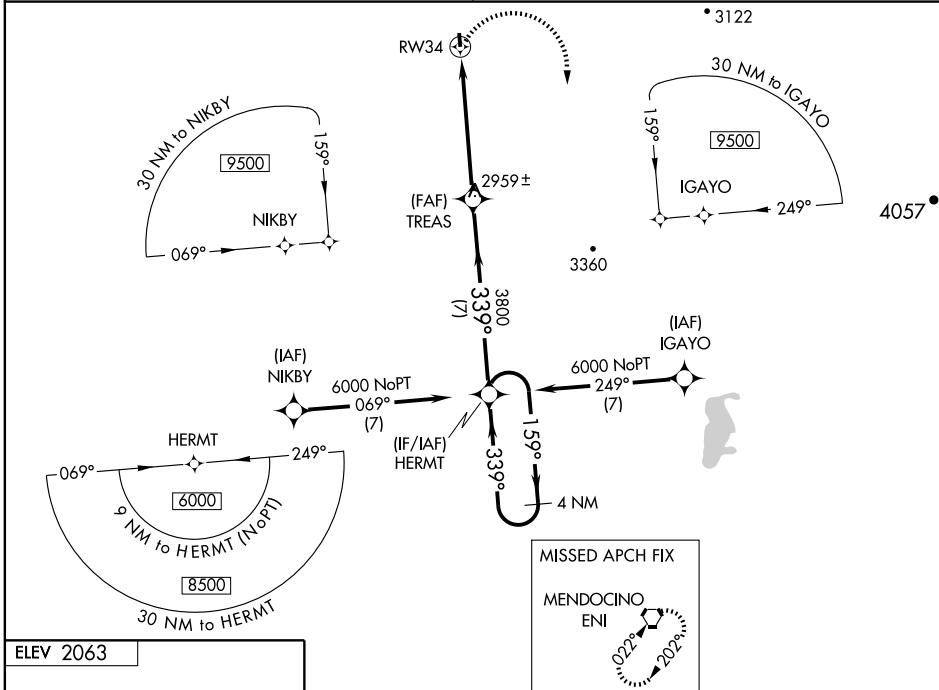
APP CRS <b>339°</b>	Rwy Idg TDZE Apt Elev	<b>3000</b> <b>2063</b> <b>2063</b>
------------------------	-----------------------------	---

**NA** Obtain local altimeter setting on CTAF, when not received use Ukiah altimeter setting.  
Circling NA west of Rwy 16-34.  
GPS or RNP-0.3 required. DME/DME RNP-0.3 NA.

MISSED APPROACH: Climbing right turn to 6000 direct ENI VORTAC and hold.

OAKLAND CENTER **132.2 350.3**

UNICOM **122.8 (CTAF)**



CATEGORY	A	B	C	D
LNAV MDA	2780-1	717 (800-1)	2780-2 717 (800-2)	NA
CIRCLING	2780-1	717 (800-1)	2780-2 717 (800-2)	NA
UKIAH MUNI ALTIMETER SETTING MINIMUMS				
LNAV MDA	3020-1¼ 957 (1000-1¼)	3020-1½ 957 (1000-1½)	3020-3 957 (1000-3)	NA
CIRCLING	3020-1¼ 957 (1000-1¼)	3020-1½ 957 (1000-1½)	3020-3 957 (1000-3)	NA

SW-2, 22 OCT 2009 to 19 NOV 2009

SW-2, 22 OCT 2009 to 19 NOV 2009