

# RNAV (GPS) RWY 16

WILLITS/ELLS FIELD-WILLITS MUNI (O28)

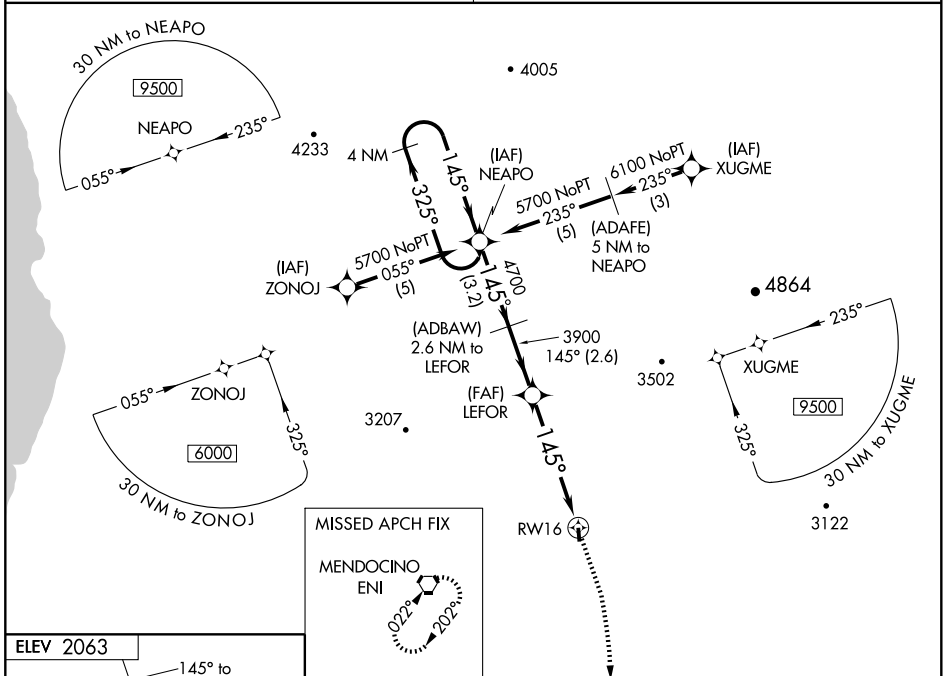
|                        |                         |
|------------------------|-------------------------|
| APP CRS<br><b>145°</b> | Rwy Idg<br><b>3000</b>  |
|                        | TDZE<br><b>2063</b>     |
|                        | Apt Elev<br><b>2063</b> |

**NA** Obtain local altimeter setting on CTAF, when not received use Ukiah Muni altimeter setting. Circling NA west of Rwy 16-34. GPS or RNP-0.3 required. DME/DME RNP-0.3 NA.

MISSED APPROACH: Climb to 4000 then climbing right turn to 6000 direct ENI VORTAC and hold.

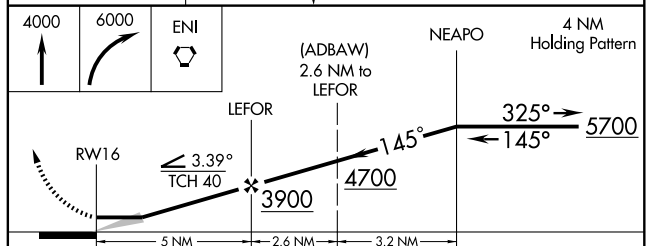
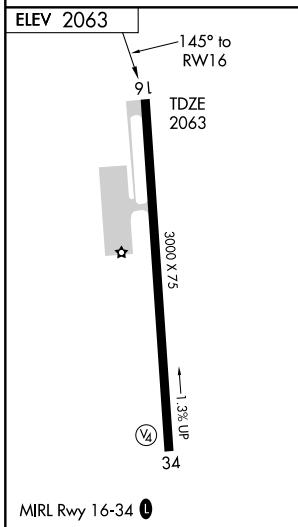
OAKLAND CENTER **132.2 350.3**

UNICOM **122.8 (CTAF)**



SW-2, 22 OCT 2009 to 19 NOV 2009

SW-2, 22 OCT 2009 to 19 NOV 2009



| CATEGORY                     | A                         | B                         | C                       | D  |
|------------------------------|---------------------------|---------------------------|-------------------------|----|
| LNAV MDA                     | 3340-1¼<br>1277 (1300-1¼) | 3340-1½<br>1277 (1300-1½) | 3340-3<br>1277 (1300-3) | NA |
| CIRCLING                     | 3340-1¼<br>1277 (1300-1¼) | 3340-1½<br>1277 (1300-1½) | 3340-3<br>1277 (1300-3) | NA |
| UKIAH MUNI ALTIMETER SETTING |                           |                           |                         |    |
| LNAV MDA                     | 3600-1¼<br>1537 (1600-1¼) | 3600-1½<br>1537 (1600-1½) | 3600-3<br>1537 (1600-3) | NA |
| CIRCLING                     | 3600-1¼<br>1537 (1600-1¼) | 3600-1½<br>1537 (1600-1½) | 3600-3<br>1537 (1600-3) | NA |