

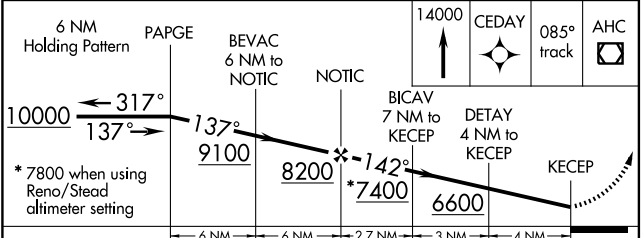
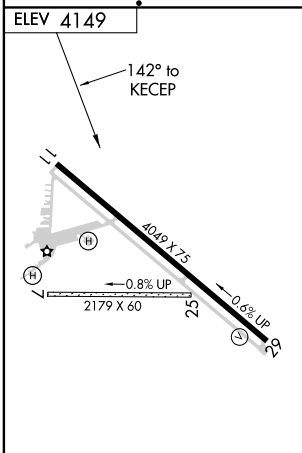
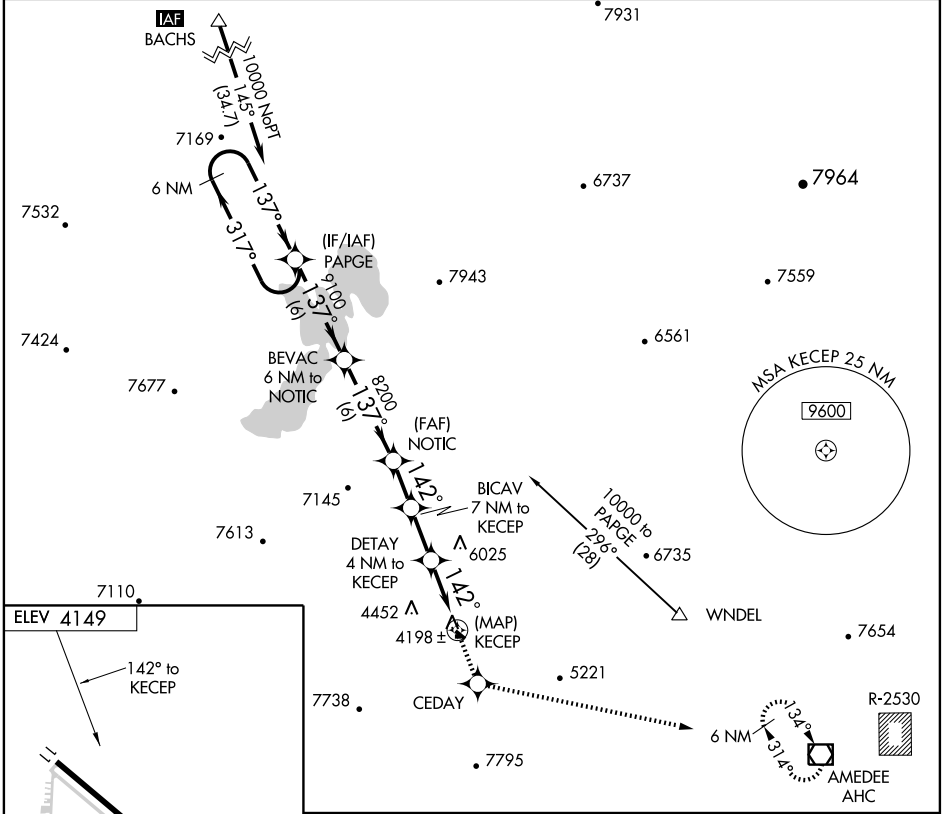
# RNAV (GPS)-A SUSANVILLE MUNI (SVE)

APP CRS	Rwy Idg	N/A
142°	TDZE	N/A
	Apt Elev	4149

**⚠** If local altimeter setting not received, use Reno/Stead altimeter setting and increase all MDAs: 720 feet.  
**⚠ NA** Circling to Rwy 7/25 NA.  
 GPS or RNP-0.3 required. DME/DME RNP-0.3 NA.  
**IAF** ARM APPROACH MODE PRIOR TO IAF.

**MISSED APPROACH:** Climb to 14000 direct CEDAY WP and via 085° track to AHC VOR/DME and hold.

AWOS-3 <b>133.8</b>	OAKLAND CENTER <b>128.8 285.5</b>	UNICOM <b>122.8 (CTAF)</b>
------------------------	--------------------------------------	-------------------------------



CATEGORY	A	B	C	D
CIRCLING	5040-1 1/4	891 (900-1 1/4)	5040-2 3/4	5040-3
			891 (900-2 3/4)	891 (900-3)

SW-2, 22 OCT 2009 to 19 NOV 2009

SW-2, 22 OCT 2009 to 19 NOV 2009