

RNAV (GPS) RWY 29

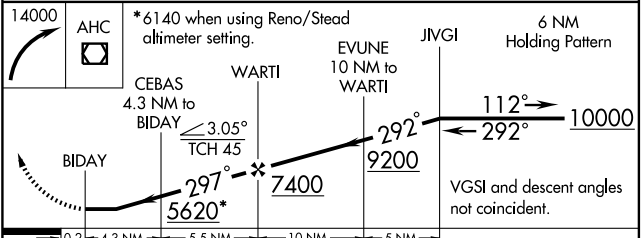
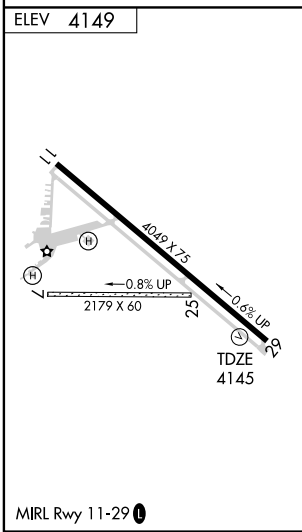
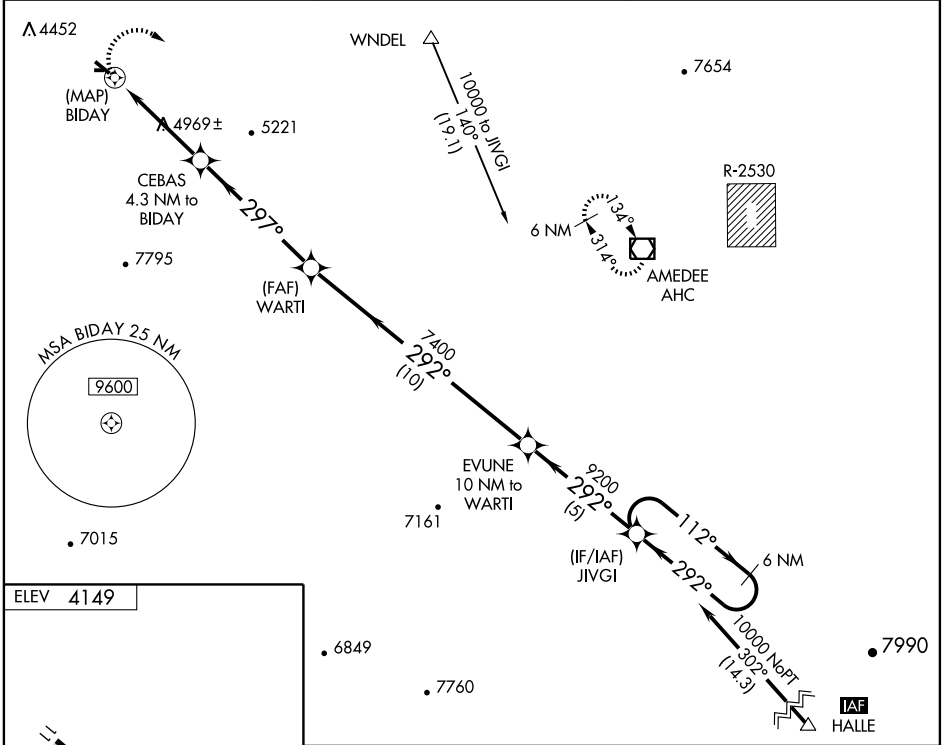
SUSANVILLE MUNI (SVE)

| | | |
|-------------|----------|-------------|
| APP CRS | Rwy Idg | 4049 |
| 297° | TDZE | 4145 |
| | Apt Elev | 4149 |

⚠ If local altimeter setting not received, use Reno/Stead altimeter setting and increase all MDAs 720 feet.
⚠ NA Straight-in minimums NA when using Reno/Stead altimeter setting. Circling to Rwy 7/25 NA.
 GPS or RNP-0.3 required. DME/DME RNP-0.3 NA.
IAF ARM APPROACH MODE PRIOR TO IAF.

MISSED APPROACH: Climbing right turn to 14000 direct AHC VOR/DME and hold.

| | | |
|------------------------|--------------------------------------|---------------------------------|
| AWOS-3 133.8 | OAKLAND CENTER 128.8 285.5 | UNICOM 122.8 (CTAF) 0 |
|------------------------|--------------------------------------|---------------------------------|



| CATEGORY | A | B | C | D |
|----------|---------------------------|---------------------------|--------|---------------|
| LNAV MDA | 5220-1¼ 1075 (1100-1¼) | 5220-1½ 1075 (1100-1½) | 5220-3 | 1075 (1100-3) |
| CIRCLING | 5220-1¼ 1071 (1100-1¼) | 5220-1½ 1071 (1100-1½) | 5220-3 | 1071 (1100-3) |

SW-2, 22 OCT 2009 to 19 NOV 2009

SW-2, 22 OCT 2009 to 19 NOV 2009