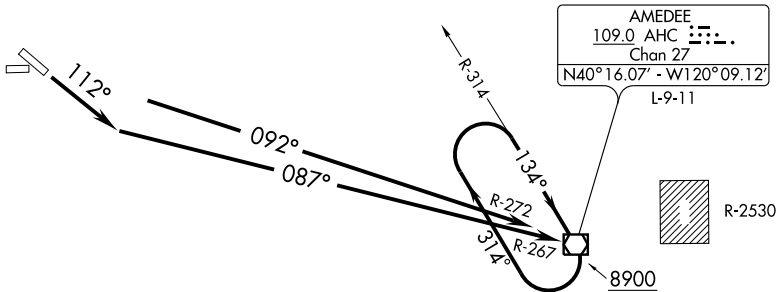


# AMEDEE ONE DEPARTURE (OBSTACLE)

OAKLAND CENTER  
128.8 285.5  
CTAF 122.8



### TAKE-OFF MINIMUMS

Rwy 7, 25, 29: NA- obstacles.

Rwy 11: Standard with minimum climb of 410' per NM to 6000 or 1900-2½ for climb in visual conditions.

NOTE: Chart not to scale.



### DEPARTURE ROUTE DESCRIPTION

TAKE-OFF RUNWAY 11: Climb via 112° heading and AHC R-267 to AHC VOR/DME, Thence....

Or climb in visual conditions to cross Susanville Muni Airport eastbound at or above 6000, then via AHC R-272 to AHC VOR/DME, Thence....

....cross AHC VOR/DME at or above 8900'. Climb in AHC holding pattern (hold NW, right turns, 134° inbound) to depart AHC VOR/DME at or above 14000 before proceeding on course.

# AMEDEE ONE DEPARTURE (OBSTACLE)

SW-2, 22 OCT 2009 to 19 NOV 2009

SW-2, 22 OCT 2009 to 19 NOV 2009