

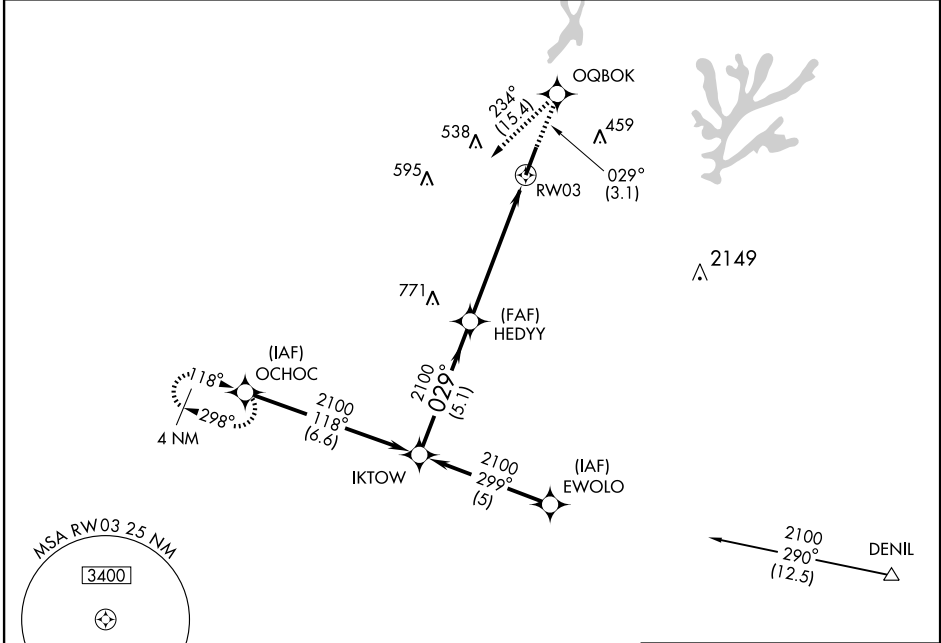
RNAV (GPS) RWY 3

SANFORD-LEE COUNTY RGNL (TTA)

APP CRS	Rwy Idg	6500
029°	TDZE	246
	Apt Elev	247

Baro-VNAV NA below -15°C (5°F). GPS or RNP-0.3 Required. DME/DME RNP-0.3 NA.	MALSR AS	MISSED APPROACH: Climb to 2500 via 029° course to OQBOK WP then via 234° course to OCHOC WP and hold.

AWOS-3 120.625	RALEIGH APP CON 125.3 380.05	UNICOM 123.075 (CTAF)	GC0 135.075
--------------------------	--	---------------------------------	-----------------------



SE-2, 22 OCT 2009 to 19 NOV 2009

SE-2, 22 OCT 2009 to 19 NOV 2009

Procedure Turn NA	VGSI and descent angles not coincident.			2500 ↑ 029° crs	OQBOK ✧	↑ 234° crs	OCHOC ✧
	IKTOW	HEDYY	RW03	*LNAV only.			
GS 3.00° TCH 45	2100 — 029° —>		*1.4 NM to RW03				
	5.1 NM		4.2 NM		1.4 NM		
CATEGORY	A	B	C	D			
GLS PA DA	NA						
LNAV/VNAV DA	680-1 434 (500-1)						
LNAV MDA	740-1/2	494 (500-1/2)	740-3/4	494 (500-3/4)	740-1	494 (500-1)	
CIRCLING	760-1 1/2	800-1 1/2	840-1 1/2	593 (600-1 1/2)	840-2	593 (600-2)	
	513 (600-1 1/2)	553 (600-1 1/2)	593 (600-1 1/2)		593 (600-2)		

