

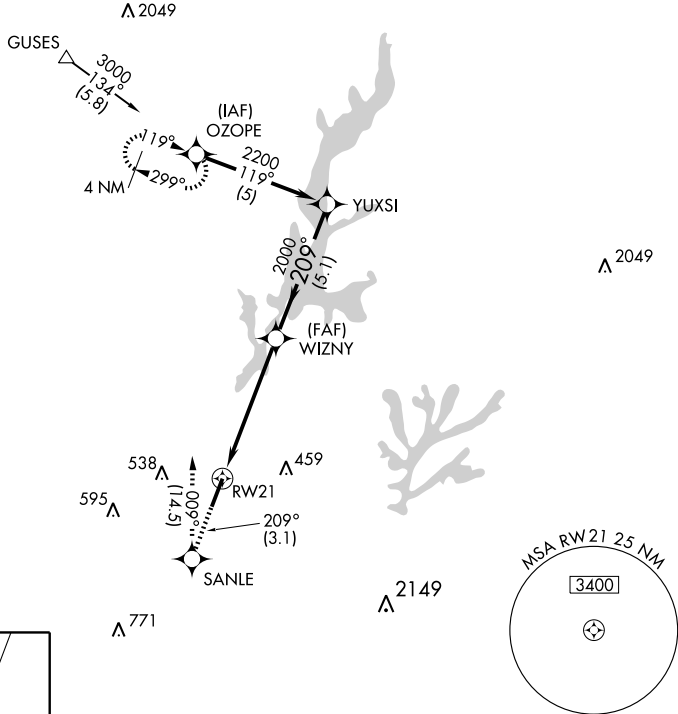
# RNAV (GPS) RWY 21

SANFORD-LEE COUNTY RGNL (TTA)

APP CRS	Rwy Idg	<b>6500</b>
<b>209°</b>	TDZE	<b>227</b>
	Apt Elev	<b>247</b>

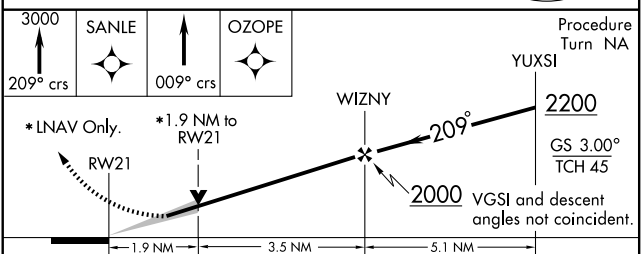
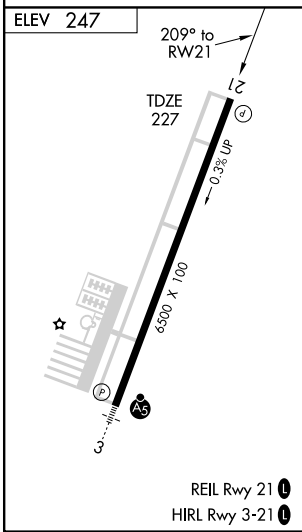
**Baro-VNAV NA below -15°C (5°F).**  
**GPS or RNP-0.3 Required. DME/DME RNP-0.3 NA.**  
**MISSED APPROACH: Climb to 3000 via 209° course to SANLE WP then via 009° course to OZOPE WP and hold.**

AWOS-3 <b>120.625</b>	RALEIGH APP CON <b>125.3 380.05</b>	UNICOM <b>123.075 (CTAF) 0</b>	GC0 <b>135.075</b>
--------------------------	--	-----------------------------------	-----------------------



SE-2, 22 OCT 2009 to 19 NOV 2009

SE-2, 22 OCT 2009 to 19 NOV 2009



CATEGORY	A	B	C	D
GLS PA DA	NA			
LNAV/VNAV DA	660-1½ 433 (500-1½)			
LNAV MDA	860-1	633 (700-1)	860-1¾ 633 (700-1¾)	860-2 633 (700-2)
CIRCLING	860-1½	613 (700-1½)	860-1¾ 613 (700-1¾)	860-2 613 (700-2)