

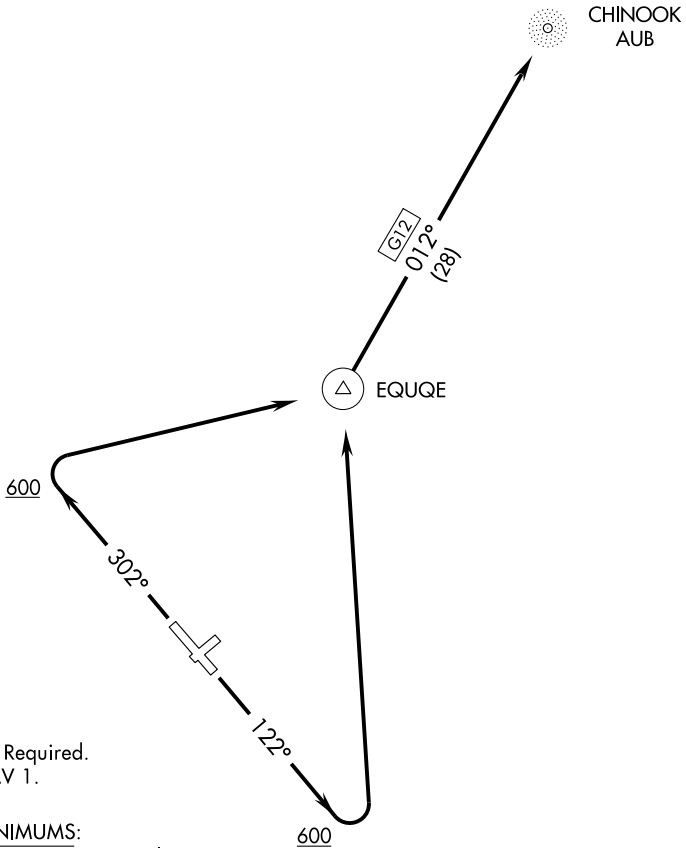
(EQUQE1.EQUQE) 09239

SL-9471 (FAA)

EGEGIK (EII)(PAII)  
EGEGIK, ALASKA

# EQUQE ONE DEPARTURE (RNAV)

ANCHORAGE CENTER  
124.8 354.0  
CTAF  
122.8



NOTE: 1. GPS Required.  
2. RNAV 1.

TAKE-OFF MINIMUMS:  
Rwy 3, 21: NA - Environmental.  
Rwy 12,30: Standard.

NOTE: Chart not to scale.



## DEPARTURE ROUTE DESCRIPTION

TAKE-OFF RWY 12: Climb via 122° heading to 600, then climbing left turn to 2500 direct EQUQE, Thence ....

TAKE-OFF RWY 30: Climb via 302° heading to 600, then climbing right turn to 2500 direct EQUQE, Thence ....

.... from EQUQE proceed via G12 to AUB NDB.

# EQUQE ONE DEPARTURE (RNAV)

(EQUQE1.EQUQE) 09239

EGEGIK, ALASKA  
EGEGIK (EII)(PAII)

AK, 22 OCT 2009 to 17 DEC 2009

AK, 22 OCT 2009 to 17 DEC 2009