

RNAV (GPS) RWY 19

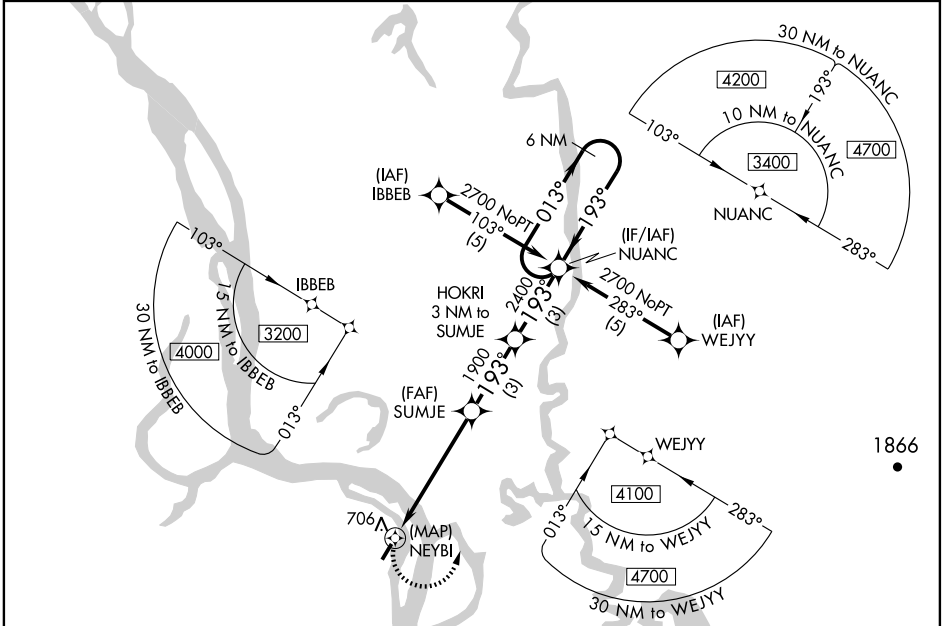
HOLY CROSS (HCA) (PAHC)

APP CRS 193°	Rwy Idg 4000 TDZE 70 Apt Elev 70
------------------------	---

▽ DME/DME RNP-0.3 NA.
▲ Circling NA west of runway 1-19.
 If local altimeter setting not received, use Anvik altimeter setting and increase all MDAs 120 feet.

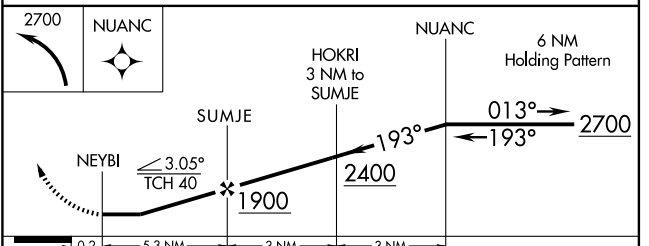
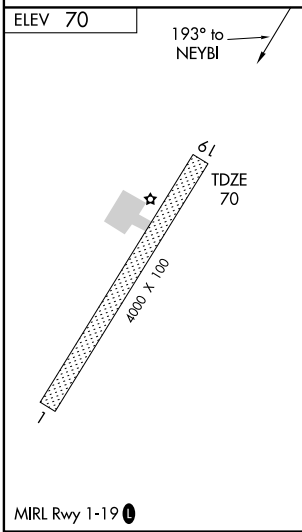
MISSED APPROACH: Climbing left turn to 2700 direct NUANC and hold.

ASOS 118.325	ANCHORAGE CENTER 118.15 251.05	KENAI RADIO 122.45	CTAF 122.8
------------------------	--	------------------------------	----------------------



AK, 22 OCT 2009 to 17 DEC 2009

AK, 22 OCT 2009 to 17 DEC 2009



CATEGORY	A	B	C	D
LNAV MDA	900-1 830 (900-1)	900-1¼ 830 (900-1¼)	900-2½ 830 (900-2½)	900-2¾ 830 (900-2¾)
CIRCLING	900-1 830 (900-1)	900-1¼ 830 (900-1¼)	900-2½ 830 (900-2½)	900-2¾ 830 (900-2¾)