

# RNAV (GPS) RWY 1

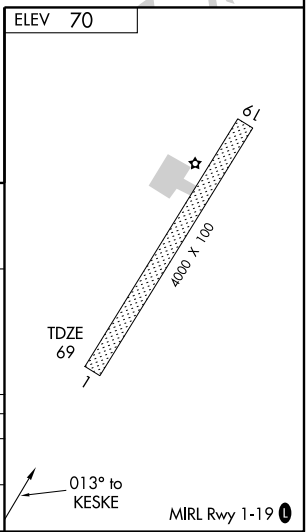
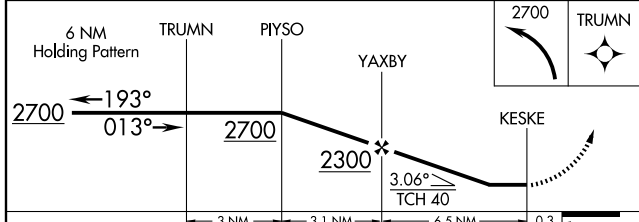
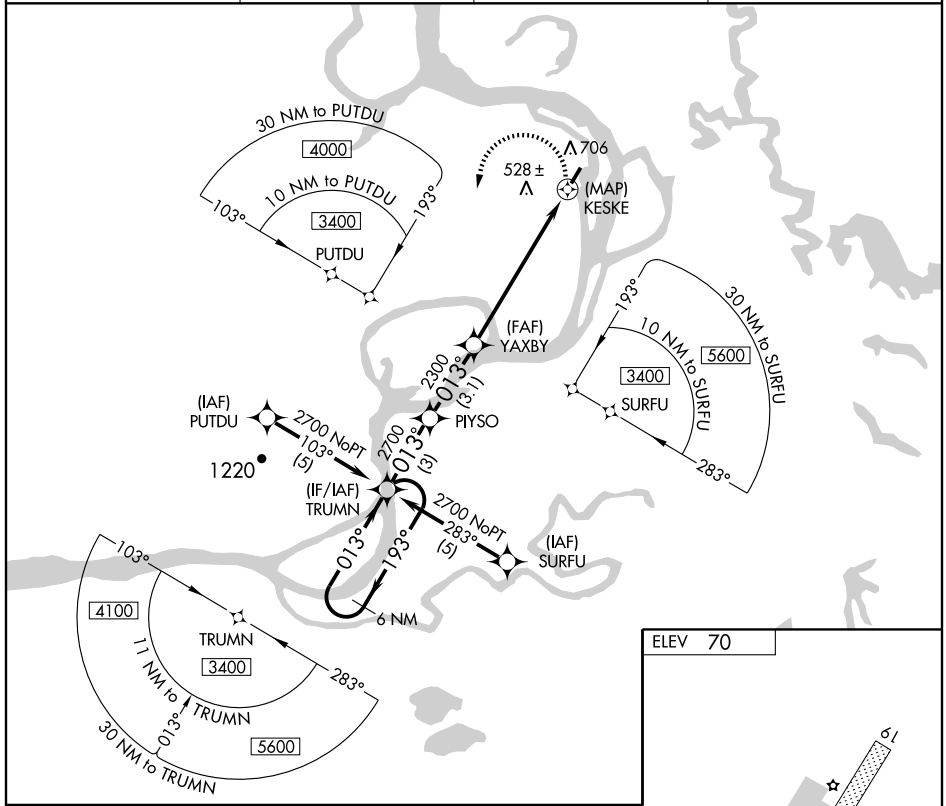
HOLY CROSS (HCA) (PAHC)

APP CRS	Rwy Idg	<b>4000</b>
<b>013°</b>	TDZE	<b>69</b>
	Apt Elev	<b>70</b>

**⚠** DME/DME RNP- 0.3 NA.  
**⚠** Circling NA west of Rwy 1-19.  
 If local altimeter setting not received, use Anvik altimeter setting and increase all MDAs 120 feet.

MISSED APPROACH: Climbing left turn to 2700 direct TRUMN and hold.

ASOS <b>118.325</b>	ANCHORAGE CENTER <b>118.15 251.05</b>	KENAI RADIO <b>122.45</b>	CTAF <b>122.8</b>
------------------------	--	------------------------------	----------------------



CATEGORY	A	B	C	D
LNVA MDA	820-1 751 (800-1)	820-1¼ 751 (800-1¼)	820-2¼ 751 (800-2¼)	820-2½ 751 (800-2½)
CIRCLING	820-1 750 (800-1)	820-1¼ 750 (800-1¼)	820-2¼ 750 (800-2¼)	820-2½ 750 (800-2½)

AK, 22 OCT 2009 to 17 DEC 2009

AK, 22 OCT 2009 to 17 DEC 2009