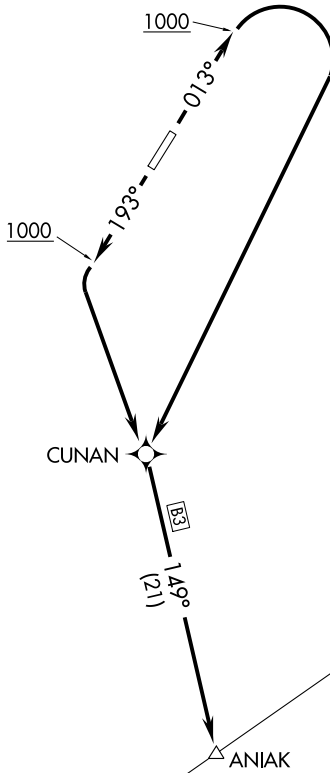


# ANIAK ONE DEPARTURE (RNAV)

ANCHORAGE CENTER  
118.15 251.05  
ASOS  
118.325  
CTAF  
122.8



### TAKE-OFF MINIMUMS

Rwy 1, 19: Standard.

NOTE: RNAV 1.

NOTE: GPS required.

### TAKE-OFF OBSTACLE NOTES

- Rwy 1: Multiple trees beginning 11' from DER, 163' right of centerline, up to 60' AGL/159' MSL. Multiple trees beginning 14' from DER, 140' left of centerline, up to 60' AGL/159' MSL.
- Rwy 19: Multiple trees beginning 21' from DER, 98' right of centerline, up to 60' AGL/159' MSL. Multiple trees beginning 47' from DER, 117' left of centerline, up to 60' AGL/159' MSL.

NOTE: Chart not to scale.

### DEPARTURE ROUTE DESCRIPTION

TAKE-OFF RUNWAY 1: Climb heading 013° to 1000, then right turn direct CUNAN, then via depicted route, thence....

TAKE-OFF RUNWAY 19: Climb heading 193° to 1000, then direct CUNAN, then via depicted route, thence....

....maintain 3700 or as assigned by ATC.

AK, 22 OCT 2009 to 17 DEC 2009

AK, 22 OCT 2009 to 17 DEC 2009