

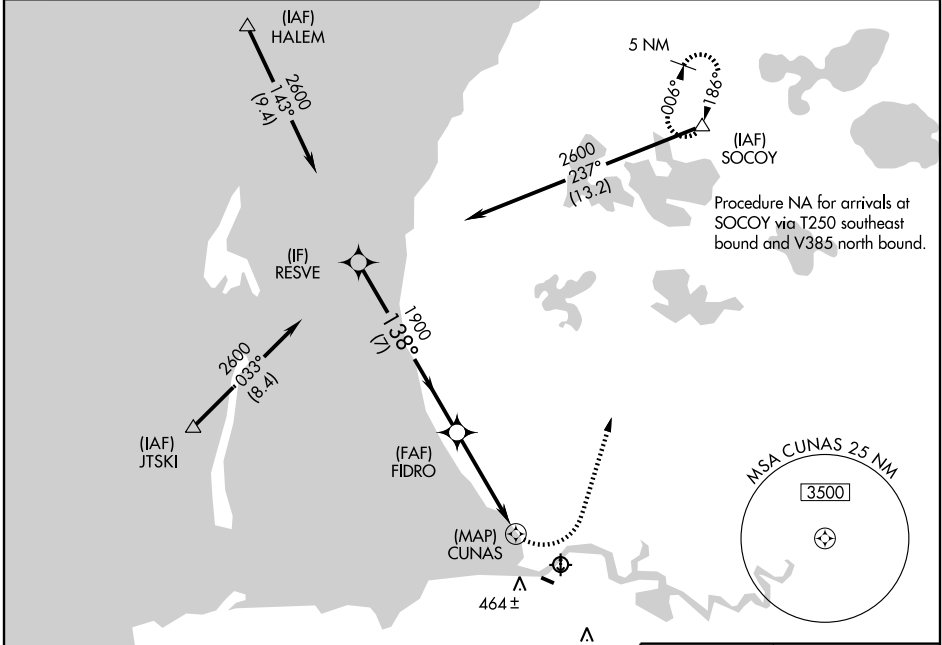
RNAV (GPS)-B
SCAMMON BAY (SCM) (PACM)

APP CRS 138°	Rwy Idg TDZE Apt Elev	N/A N/A 14
------------------------	-----------------------------	---------------------------------------

⚠ Circling NA south of Rwy 10-28. DME/DME RNP-0.3 NA.
⚠ When local altimeter setting not received, use Hooper Bay altimeter setting and increase all MDA 360 feet.

MISSED APPROACH: Climbing left turn to 4500 direct SOCOY and hold, continue climb-in-hold to 4500.

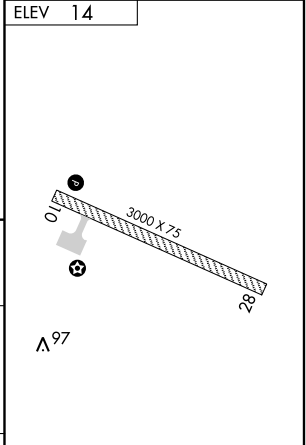
ASOS 118.425	ANCHORAGE CENTER 124.5 226.8	UNICOM 123.0 (CTAF) 0
------------------------	--	---------------------------------



Procedure NA for arrivals at SOCOY via T250 southeast bound and V385 north bound.

AK, 22 OCT 2009 to 17 DEC 2009

AK, 22 OCT 2009 to 17 DEC 2009



Procedure Turn NA	RESVE	FIDRO	CUNAS	SOCOY
	2600	1900	4500	△
	7 NM		4.2 NM	

CATEGORY	A	B	C	D
CIRCLING	540-2¼ 526 (600-2¼)	640-2¼ 626 (700-2¼)	NA	

REIL Rwy 10 0
MIRL Rwy 10-28 0