

RNAV (GPS) RWY 28

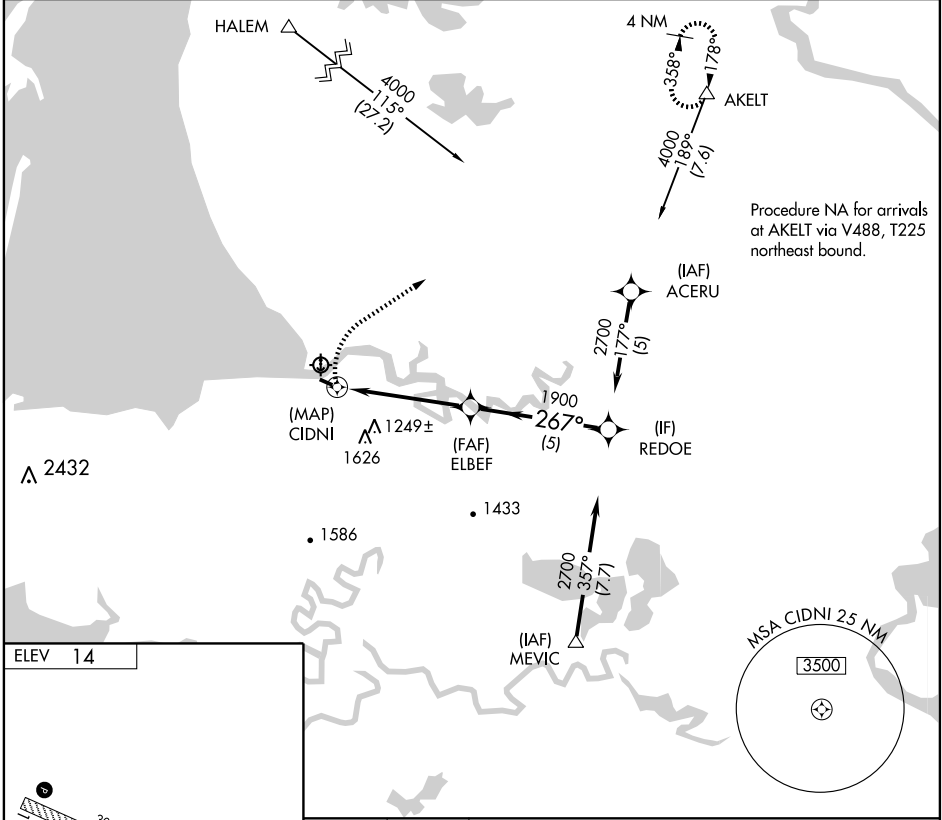
SCAMMON BAY (SCM) (PACM)

APP CRS 267°	Rwy Idg TDZE Apt Elev	3000 14 14
------------------------	-----------------------------	---------------------------------------

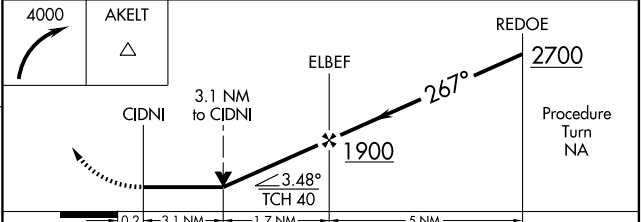
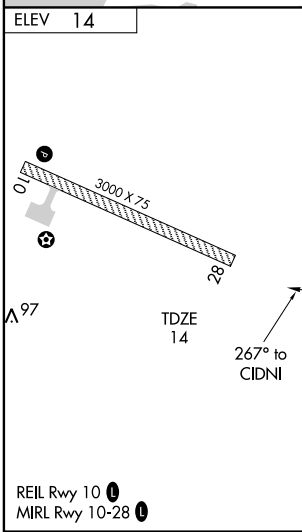
⚠ Circling NA south of Rwy 10-28. DME/DME RNP-0.3 NA. Visibility reduction by helicopters NA. VDP NA when using Hooper Bay altimeter setting. When local altimeter setting not received, use Hooper Bay altimeter setting and increase all MDA 360 feet.

MISSED APPROACH:
Climbing right turn to 4000 direct AKELT and hold.

ASOS 118,425	ANCHORAGE CENTER 124.5 226.8	UNICOM 123.0 (CTAF) 0
------------------------	--	---------------------------------



Procedure NA for arrivals at AKELT via V488, T225 northeast bound.



CATEGORY	A	B	C	D
LNAV MDA	1260-1¼ 1246 (1300-1½)	1260-1½ 1246 (1300-1½)	NA	
CIRCLING	1260-1¼ 1246 (1300-1½)	1260-1½ 1246 (1300-1½)	NA	

AK, 22 OCT 2009 to 17 DEC 2009

AK, 22 OCT 2009 to 17 DEC 2009